

WAAS CH <b>42506</b> <b>W05A</b>	APP CRS <b>051°</b>	Rwy Idg TDZE Apt Elev	<b>5000</b> <b>235</b> <b>235</b>
--	------------------------	-----------------------------	---

# RNAV (GPS) RWY 5

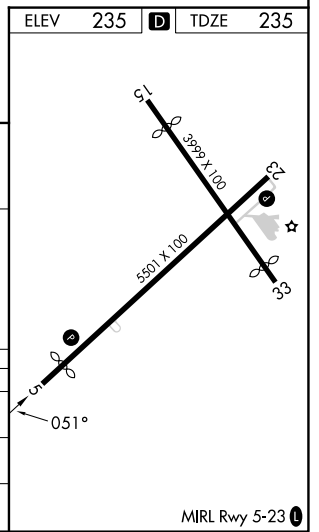
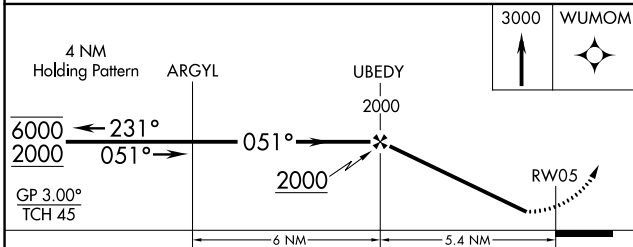
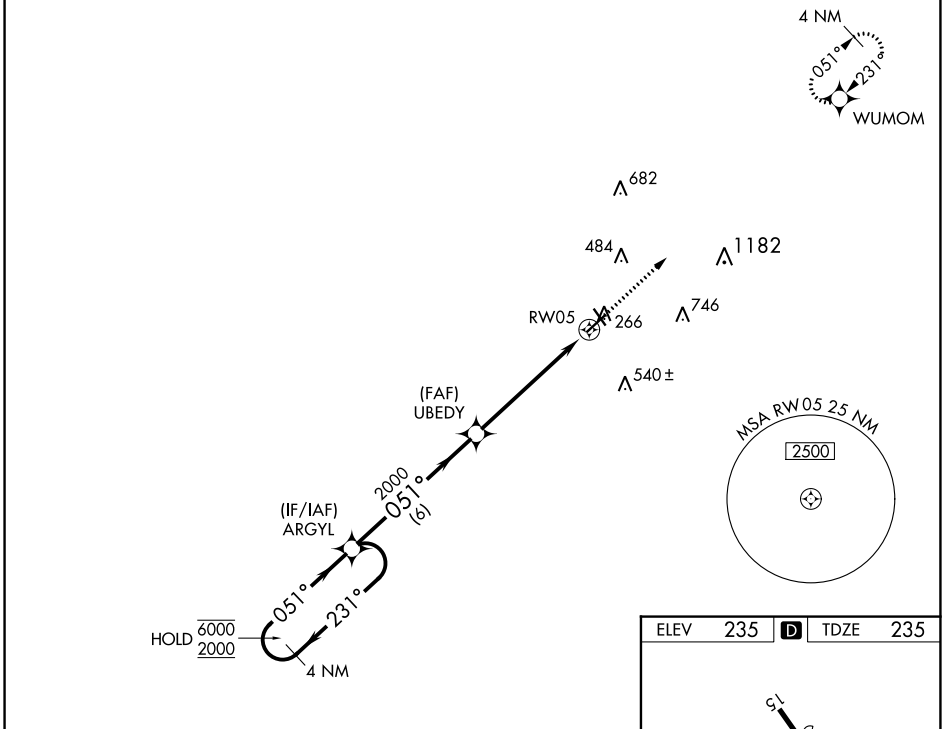
COOK COUNTY (15J)

RNP APCH - GPS.

▼ Procedure NA at night.  
 ▲ NA Rwy 5 helicopter visibility reduction below 1 SM NA.  
 Baro-VNAV NA.  
 Use Moultrie altimeter setting.

MISSED APPROACH: Climb to 3000 direct WUMOM and hold, continue climb-in-hold to 3000.

AWOS-3PT <b>118.025</b>	MGR AWOS-3PT <b>118.925</b>	VALDOSTA APP CON★ <b>126.6 285.6</b>	UNICOM <b>122.8 (CTAF) 0</b>
----------------------------	--------------------------------	---	---------------------------------



CATEGORY	A	B	C	D
LPV DA		534-1	299 (300-1)	
LNAV/VNAV DA		595-1	360 (400-1)	
LNAV MDA	740-1	505 (600-1)	740-1 <sup>3</sup> / <sub>8</sub>	505 (600-1 <sup>3</sup> / <sub>8</sub> )

SE-4, 11 JUL 2024 to 08 AUG 2024

SE-4, 11 JUL 2024 to 08 AUG 2024