

APP CRS <b>346°</b>	Rwy Idg TDZE Apt Elev	<b>7025</b> <b>6221</b> <b>6221</b>
------------------------	-----------------------------	---

# RNAV (GPS) RWY 34

AFTON MUNI (AFO)

RNP APCH - GPS.	MISSED APPROACH: (Do not exceed 200K until IVAYU) Climb to 8080 then climbing left turn to 11700 direct IVAYU and hold.
<p>⚠ Circling NA east of Rwy 16-34. Procedure NA at night.</p> <p>⚠ NA Rwy 34 helicopter visibility reduction below 1 SM NA.</p> <p>❄ -22°C When Afton altimeter setting not received, procedure NA.</p>	*Missed approach requires minimum climb of 364 feet per NM to 8900.

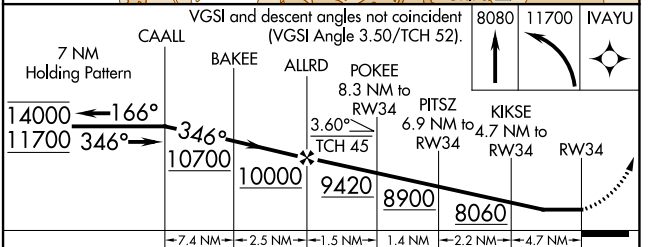
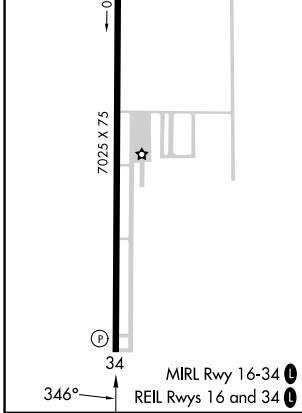
AWOS-3P <b>119.025</b>	SALT LAKE CENTER <b>128.35 239.25</b>	UNICOM <b>122.8 (CTAF)</b>
---------------------------	--	-------------------------------



NW-1, 11 JUL 2024 to 08 AUG 2024

NW-1, 11 JUL 2024 to 08 AUG 2024

ELEV 6221	TDZE 6221
-----------	-----------



CATEGORY	A	B	C	D
RNAV MDA*	7520-1¼ 1299 (1300-1¼)	7520-1½ 1299 (1300-1½)	7520-3 1299 (1300-3)	NA
RNAV MDA	7800-1¼ 1579 (1600-1¼)	7800-1½ 1579 (1600-1½)	7800-3 1579 (1600-3)	NA
CIRCLING	7800-1¼ 1579 (1600-1¼)	7800-1½ 1579 (1600-1½)	7800-3 1579 (1600-3)	NA