

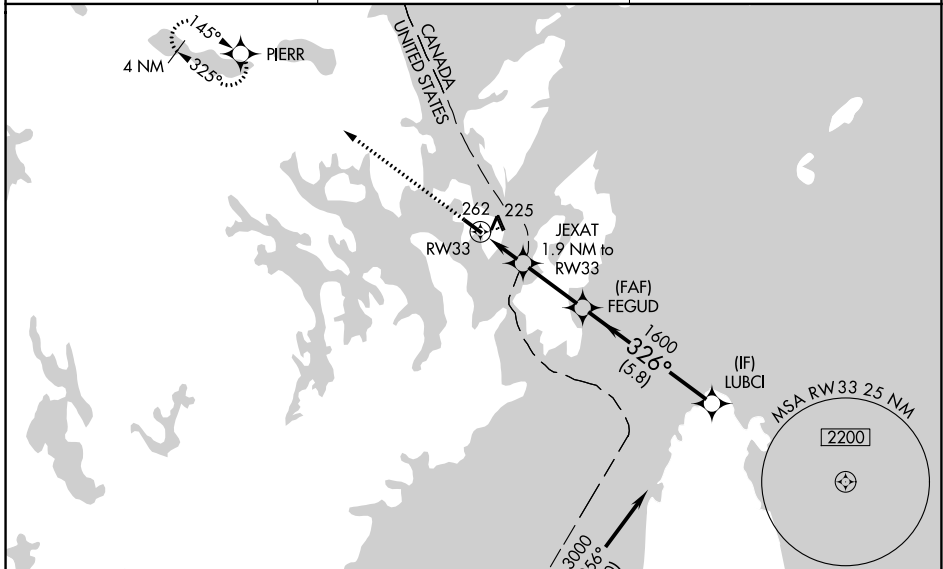
WAAS CH <b>78340</b> <b>W33A</b>	APP CRS <b>326°</b>	Rwy Idg <b>4002</b> TDZE <b>45</b> Apt Elev <b>45</b>
--	------------------------	---

# RNAV (GPS) RWY 33

EASTPORT MUNI (EPM)

RNP APCH.	For uncompensated Baro-VNAV systems, LNAV/VNAV NA below -15°C or above 47°C. Rwy 33 helicopter visibility reduction below ¼ SM NA. When local altimeter setting not received, use Hancock County-Bar Harbor altimeter setting; increase LPV DA to 531 feet and all visibilities ½ SM; increase LNAV/VNAV DA to 552 feet and all visibilities ½ SM; increase all MDA 160 feet and visibility Cat C and D ½ SM. VDP and Baro-VNAV NA when using Hancock County-Bar Harbor altimeter setting. Circling Rwy 15 NA at night.	MISSED APPROACH: Climb to 4000 direct PIERR and hold, continue climb-in-hold to 4000.
-----------	---	--

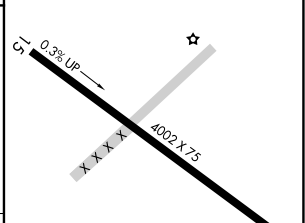
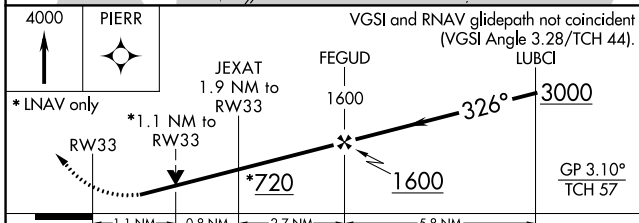
AWOS-AV <b>122.8</b>	BOSTON CENTER <b>124.25 290.5</b>	UNICOM <b>122.8 (CTAF)</b>
-------------------------	--------------------------------------	-------------------------------



NE-1, 11 JUL 2024 to 08 AUG 2024

NE-1, 11 JUL 2024 to 08 AUG 2024

ELEV 45	TDZE 45
△ 250±	



CATEGORY	A	B	C	D
LPV DA	378-1 333 (400-1)			
LNAV/VNAV DA	386-1 341 (400-1)			
LNAV MDA	480-1	435 (500-1)	480-1¼	435 (500-1¼)
CIRCLING	580-1	535 (600-1)	580-1½	720-2¼ 675 (700-2¼)

MIRL Rwy 15-33	Ⓡ
REIL Rws 15 and 33	Ⓡ