

| | | |
|--|------------------------|---|
| WAAS CH 62825 W23A | APP CRS 227° | Rwy Idg 5498 TDZE 352 Apt Elev 368 |
|--|------------------------|---|

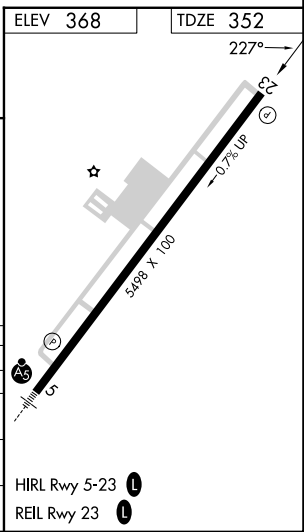
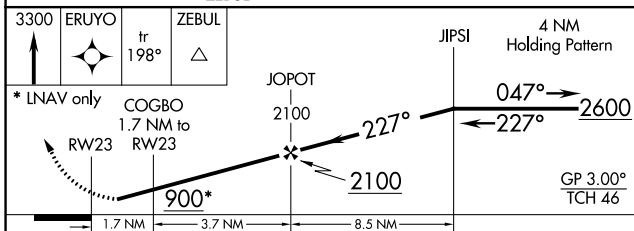
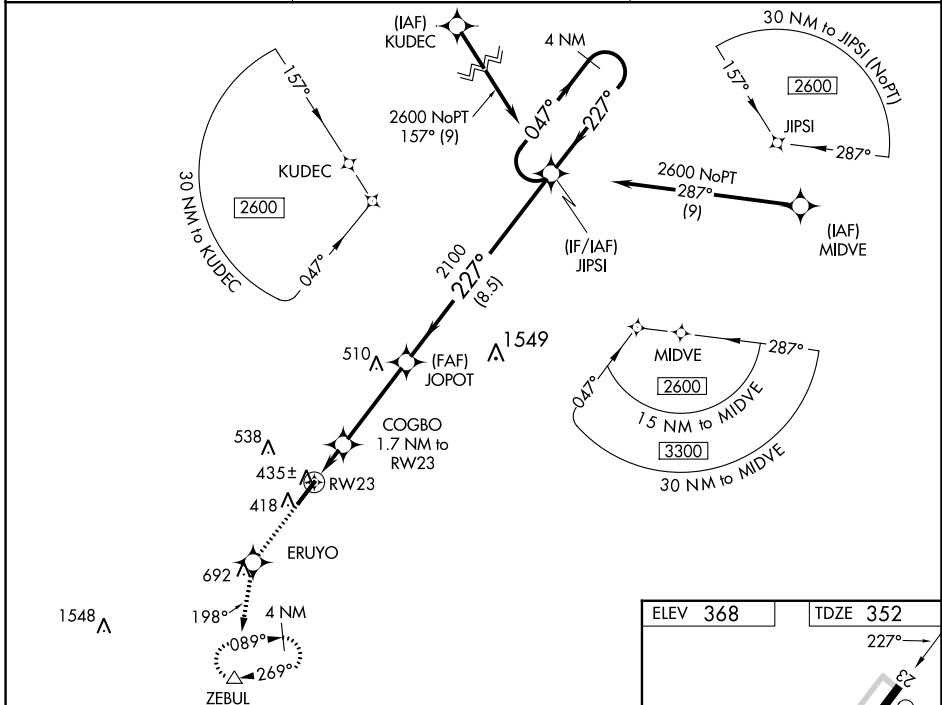
RNAV (GPS) RWY 23

TRIANGLE NORTH EXEC (LHZ)

⚠ Baro-VNAV NA when using Raleigh-Durham altimeter setting. For uncompensated Baro-VNAV systems, LNAV/VNAV NA below -15°C (5°F) or above 41°C (105°F). When VGSi inop, Straight-in/Circling Rwy 23 procedure NA at night. DME/DME RNP-0.3 NA. Helicopter visibility reduction below 1 SM NA. When local altimeter setting not received, use Raleigh-Durham altimeter setting and increase LPV DA to 667 feet; LNAV/VNAV DA to 684 feet and all visibilities ½ SM. Increase all MDAs 80 feet and visibility Cats C/D ¾ SM.

MISSED APPROACH: Climb to 3300 direct ERUYO and on track 198° to ZEBUL and hold, continue climb-in-hold to 3300.

| | | |
|--------------------------|---|---------------------------------|
| AWOS-3 118.325 | RALEIGH APP CON 125.3 353.675 | UNICOM 123.0 (CTAF) 0 |
|--------------------------|---|---------------------------------|



| CATEGORY | A | B | C | D |
|--------------|----------------------|----------------------|------------------------|-----------------------|
| LPV DA | | 602-1 | 250 (300-1) | |
| LNAV/VNAV DA | | 619-1 | 267 (300-1) | |
| LNAV MDA | | 700-1 | 348 (400-1) | |
| CIRCLING | 800-1 432 (500-1) | 840-1 472 (500-1) | 980-1¾ 612 (700-1¾) | 1000-2 632 (700-2) |

SE-2, 11 JUL 2024 to 08 AUG 2024

SE-2, 11 JUL 2024 to 08 AUG 2024