

APP CRS	Rwy Idg	5000
177°	TDZE	105
	Apt Elev	107

RNAV (GPS) RWY 18

ALLEN PARISH (ACP)

RNP APCH - GPS.

Procedure NA at night. Rwy 18 helicopter visibility reduction below 1 SM NA. When local altimeter setting not received, use Alexandria Intl altimeter setting; increase all MDAs 100 feet and visibility LNAV Cat C ¼ SM.

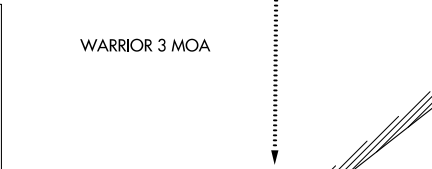
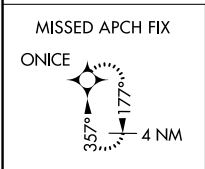
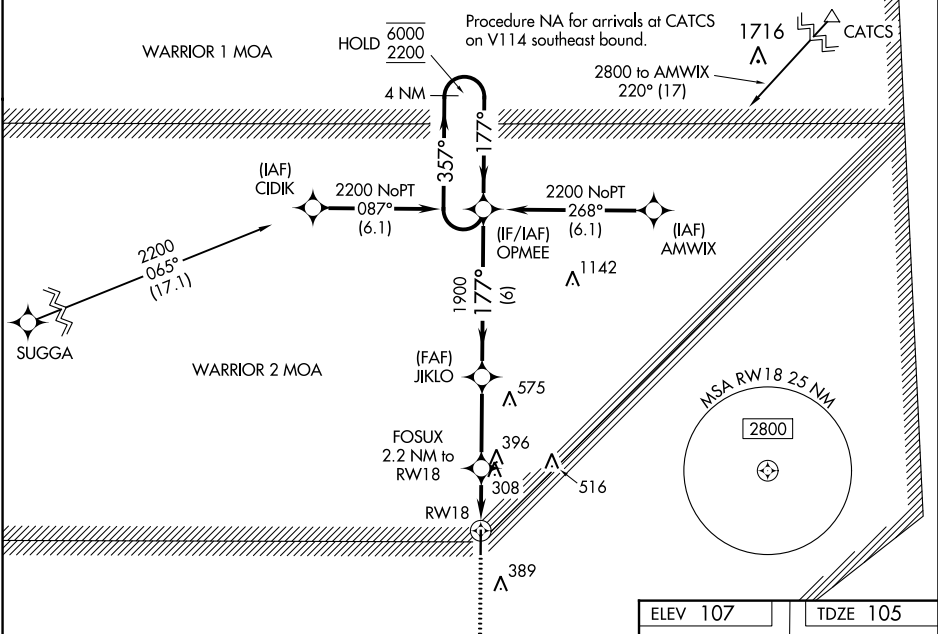
MISSED APPROACH: Climb to 2000 direct ONICE and hold.

AWOS-3PT
118.275

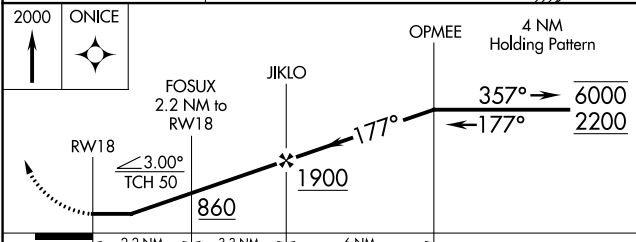
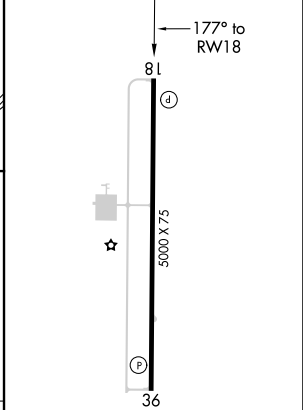
POLK APP CON
123.7 261.3

GCO
135.075

UNICOM
122.8 (CTAF)



ELEV 107	TDZE 105
----------	----------



CATEGORY	A	B	C	D
LNAV MDA	560-1	455 (500-1)	560-1 ³ / ₈ 455 (500-1 ³ / ₈)	NA

MIRL Rwy 18-36

REIL Rwy 18 and 36

SC-4, 11 JUL 2024 to 08 AUG 2024

SC-4, 11 JUL 2024 to 08 AUG 2024