

WAAS CH 82414 W06A	APP CRS 058°	Rwy ldg 4500 TDZE 933 Apt Elev 933
--	------------------------	---

RNAV (GPS) RWY 6

SULLIVAN RGNL (UUV)

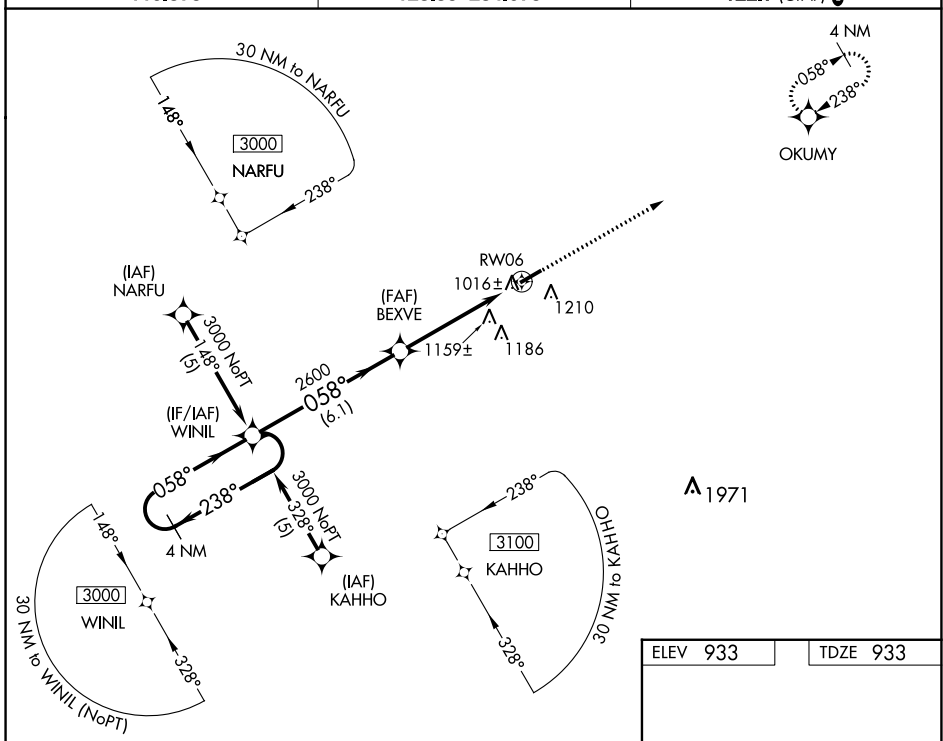
▽ Circling to Rwy 24 NA at night. For uncompensated Baro-VNAV systems, LNAV/VNAV NA below -16°C (4°F) or above 54°C (130°F). DME/DME RNP-0.3 NA. Visibility reduction by helicopters NA.
△ NA Baro-VNAV and VDP NA when using Rolla Nil altimeter setting. When local altimeter setting not received, use Rolla Nil altimeter setting and increase all DA 98 feet and all MDA 100 feet, increase LPV Cat A and B visibility ½ mile and LNAV/VNAV Cat A and B visibility ¼ mile.

MISSED APPROACH:
Climb to 3000 direct OKUMY and hold.

AWOS-3PT
119.375

KANSAS CITY CENTER
128.35 284.675

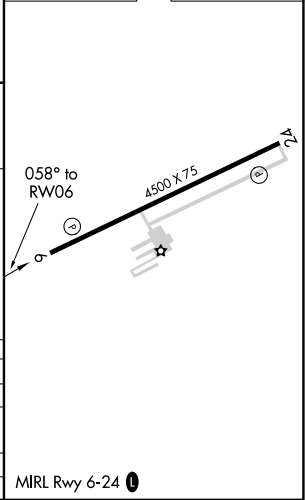
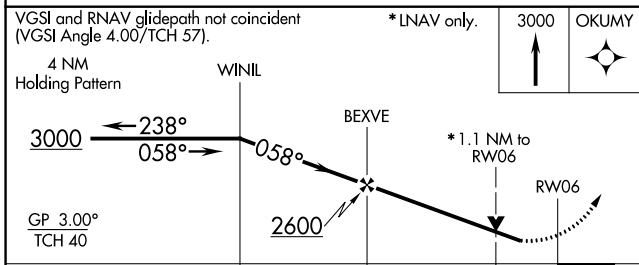
UNICOM
122.7 (CTAF) 0



NC-3, 11 JUL 2024 to 08 AUG 2024

NC-3, 11 JUL 2024 to 08 AUG 2024

ELEV 933	TDZE 933
----------	----------



CATEGORY	A	B	C	D
LPV DA	1236-1	303 (400-1)		NA
LNAV/VNAV DA	1488-2	555 (600-2)		NA
LNAV MDA	1420-1	487 (500-1)		NA
CIRCLING	1520-1	587 (600-1)		NA