

APP CRS	Rwy Idg	<b>5501</b>
<b>034°</b>	TDZE	<b>2131</b>
	Apt Elev	<b>2131</b>

# RNAV (GPS) Y RWY 2

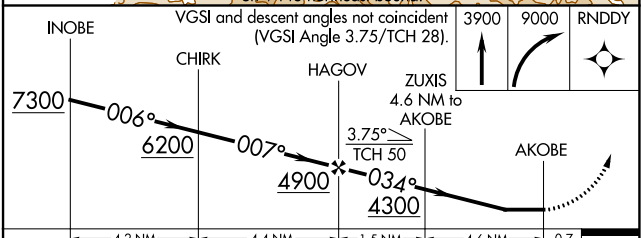
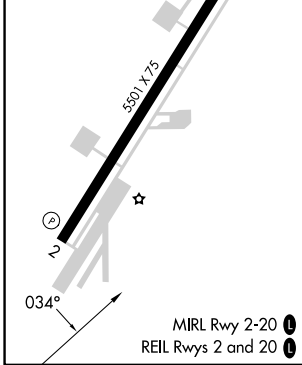
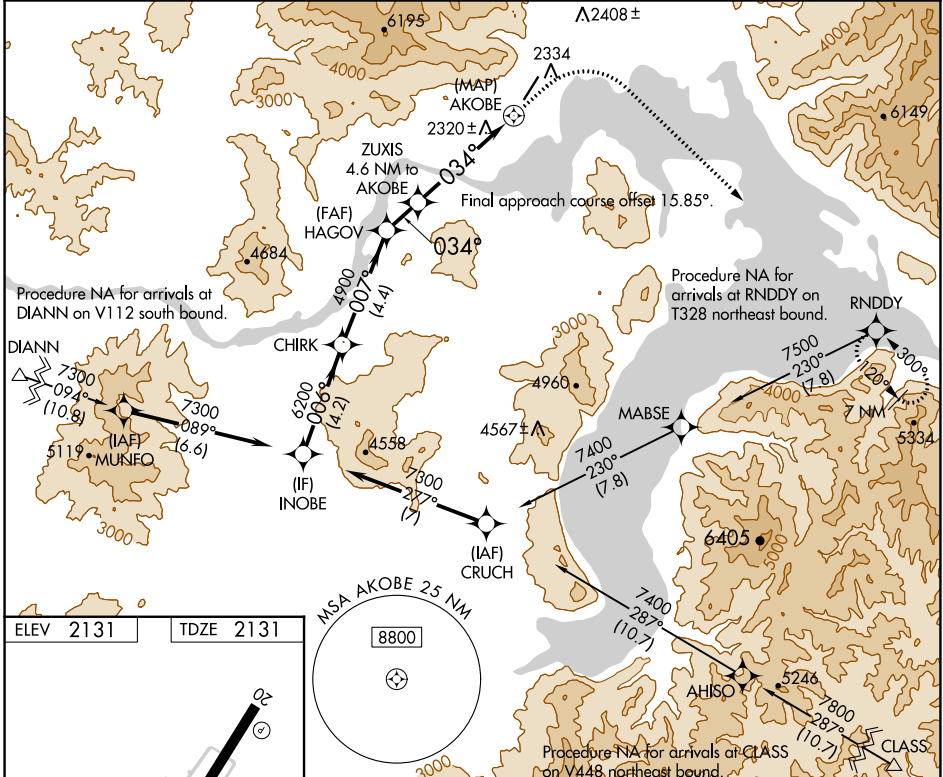
SANDPOINT (SZT)

RNP APCH - GPS.

**⚠** Circling NA west of Rwy 2-20. Straight-in Rwy 2 NA at night, Circling Rwy 2 NA at night. Rwy 2 helicopter visibility reduction below 1 SM NA.

MISSED APPROACH: Climb to 3900 then climbing right turn to 9000 direct RNDDDY and hold, continue climb-in-hold to 9000.  
 \*Missed approach requires minimum climb of 310 feet per NM to 8100; If unable to meet climb gradient, see RNAV (GPS)-B.

AWOS-2 <b>135.425</b>	SEATTLE CENTER <b>123.95 290.55</b>	UNICOM <b>122.7 (CTAF) 0</b>
--------------------------	--	---------------------------------



CATEGORY	A	B	C	D
LNAV MDA*	3560-1¼ 1429 (1500-1¼)	3560-1½ 1429 (1500-1½)	3560-3 1429 (1500-3)	NA
CIRCLING	3560-1¼ 1429 (1500-1¼)	3560-1½ 1429 (1500-1½)	3560-3 1429 (1500-3)	NA

NW-1, 11 JUL 2024 to 08 AUG 2024

NW-1, 11 JUL 2024 to 08 AUG 2024