

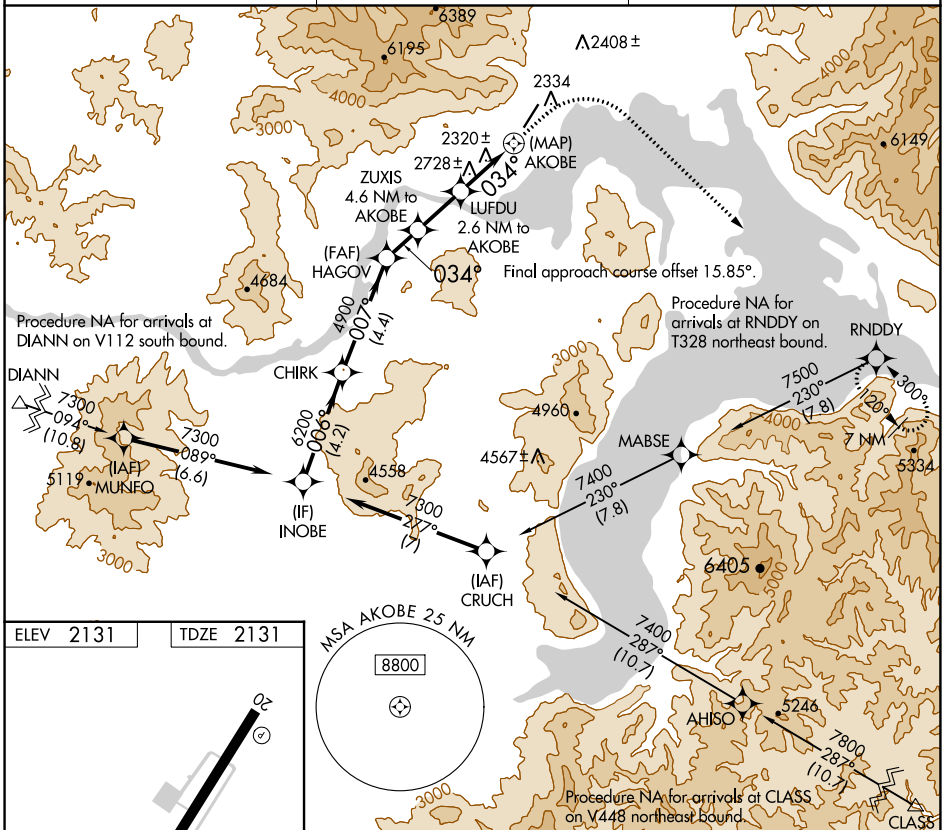
WAAS CH <b>63146</b> <b>W02A</b>	APP CRS <b>034°</b>	Rwy Idg TDZE Apt Elev	<b>5501</b> <b>2131</b> <b>2131</b>
--	------------------------	-----------------------------	---

# RNAV (GPS) Z RWY 2

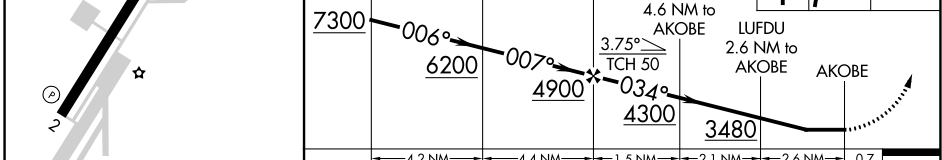
SANDPOINT (SZT)

RNP APCH - GPS.	MISSED APPROACH: Climb to 3900 then climbing right turn to 9000 direct RNDY and hold, continue climb-in-hold to 9000. *Missed approach requires minimum climb of 350 feet per NM to 6500; If unable to meet climb gradient, see RNAV (GPS)-B.
⚠ Rwy 2 helicopter visibility reduction below 1 SM NA. Procedure NA at night.	

AWOS-2 <b>135.425</b>	SEATTLE CENTER <b>123.95 290.55</b>	UNICOM <b>122.7 (CTAF) 0</b>
--------------------------	--	---------------------------------



ELEV 2131	TDZE 2131	VGSi and descent angles not coincident (VGSi Angle 3.75/TCH 28).								
		INOBE	CHIRK	HAGOV	ZUXIS	LUFDU	AKOBE	3900	9000	RNDY



CATEGORY	A	B	C	D
LP MDA*	3100-1¼ 969 (1000-1¼)	3100-1½ 969 (1000-1½)	3100-3 969 (1000-3)	NA

NW-1, 11 JUL 2024 to 08 AUG 2024

NW-1, 11 JUL 2024 to 08 AUG 2024