

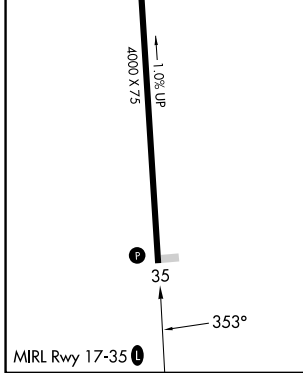
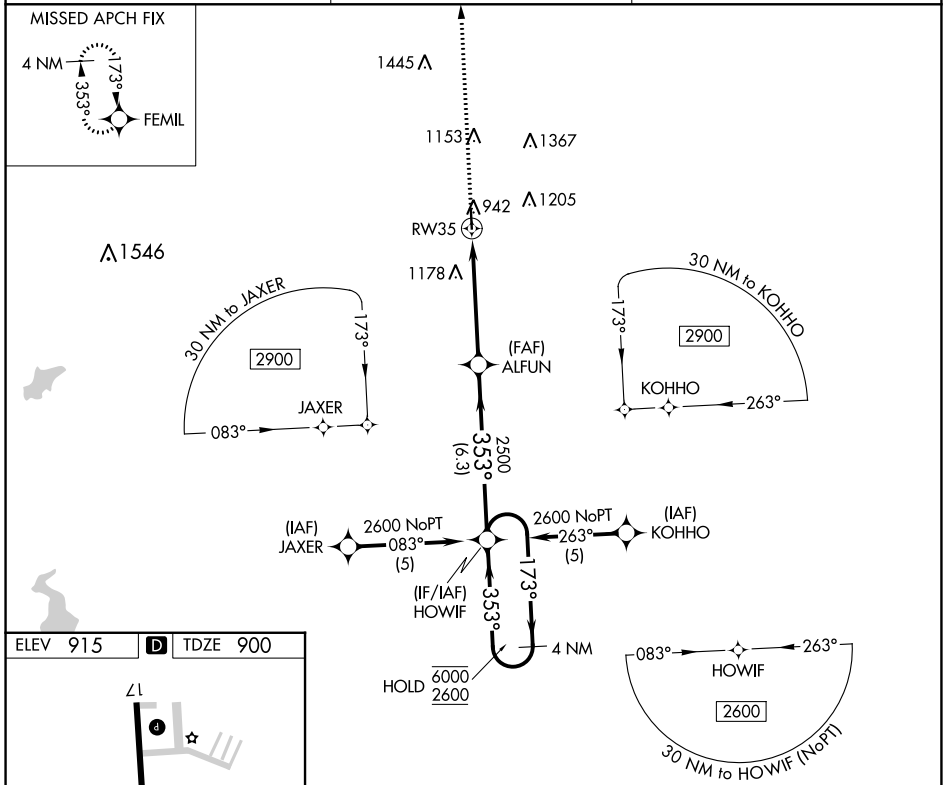
APP CRS	Rwy Idg	4000
353°	TDZE	900
	Apt Elev	915

RNAV (GPS) RWY 35

LAWRENCE SMITH MEML (L.R.Y)

RNP APCH.	MISSED APPROACH: Climb to 3000 direct FEMIL and hold.
<p>Procedure NA at night.</p> <p>Rwy 35 helicopter visibility reduction below 1 SM NA.</p>	

AWOS-3PT 119.975	KANSAS CITY CENTER 125.55 327.0	UNICOM 123.0 (CTAF) 0
----------------------------	---	--



3000	FEMIL	VGSI and descent angles not coincident (VGSI Angle 3.00/TCH 47).	
		HOWIF	4 NM Holding Pattern
		ALFUN	173° → 6000
		RWY 35	← 353° 2600
			353°
			3.04° TCH 40
			2500
			4.9 NM
			6.3 NM
CATEGORY	A	B	C
LNAV MDA	1380-1	480 (500-1)	1380-1 3/8 480 (500-1 3/8)
CIRCLING	1400-1 485 (500-1)	1460-1 545 (600-1)	1520-1 3/4 605 (700-1 3/4)
			NA
			NA

NC-3, 11 JUL 2024 to 08 AUG 2024

NC-3, 11 JUL 2024 to 08 AUG 2024