

WAAS CH 53624 W19A	APP CRS 188°	Rwy Idg TDZE Apt Elev	5000 431 436
----------------------------------------	------------------------	-----------------------------	-----------------------------------------

RNAV (GPS) RWY 19

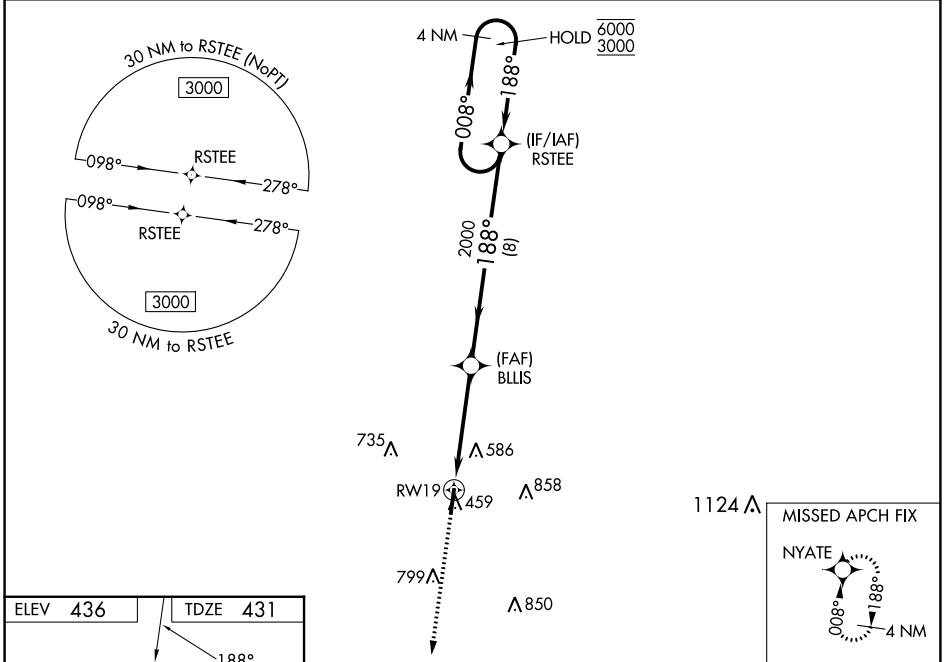
FAYETTE COUNTY (FYE)

RNP APCH - GPS.

▼ Baro-VNAV and VDP NA when using Memphis Intl altimeter setting. Rwy 19 helicopter visibility reduction below $\frac{3}{4}$ SM NA. When local altimeter setting not received, use Memphis Intl altimeter setting: increase LPV DA to 817 feet and all visibilities $\frac{1}{8}$ SM, increase LNAV/VNAV DA to 779 feet; increase all MDA 100 feet and visibility LNAV Cat C $\frac{1}{8}$ SM and Circling Cat C $\frac{1}{2}$ SM.

MISSED APPROACH:
Climb to 3000 direct NYATE and hold.

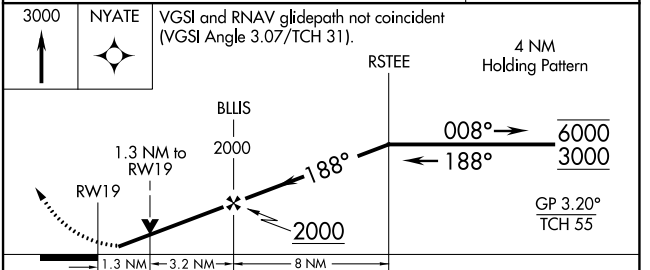
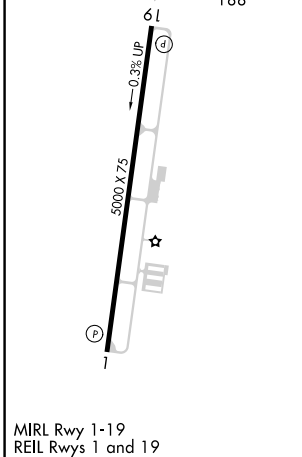
AWOS-3 119.875	MEMPHIS APP CON 125.8 338.3	CTAF 122.9
--------------------------	---------------------------------------	----------------------



SE-1, 11 JUL 2024 to 08 AUG 2024

SE-1, 11 JUL 2024 to 08 AUG 2024

ELEV 436	TDZE 431
----------	----------



CATEGORY	A	B	C	D
LPV DA		721-1	290 (300-1)	NA
LNAV/VNAV DA		683-1	252 (300-1)	NA
LNAV MDA	880-1	449 (500-1)	880- $1\frac{3}{8}$ 449 (500- $1\frac{3}{8}$)	NA
CIRCLING	900-1 464 (500-1)	920-1 484 (500-1)	1160-2 724 (800-2)	NA