

# KNIGHTS THREE DEPARTURE

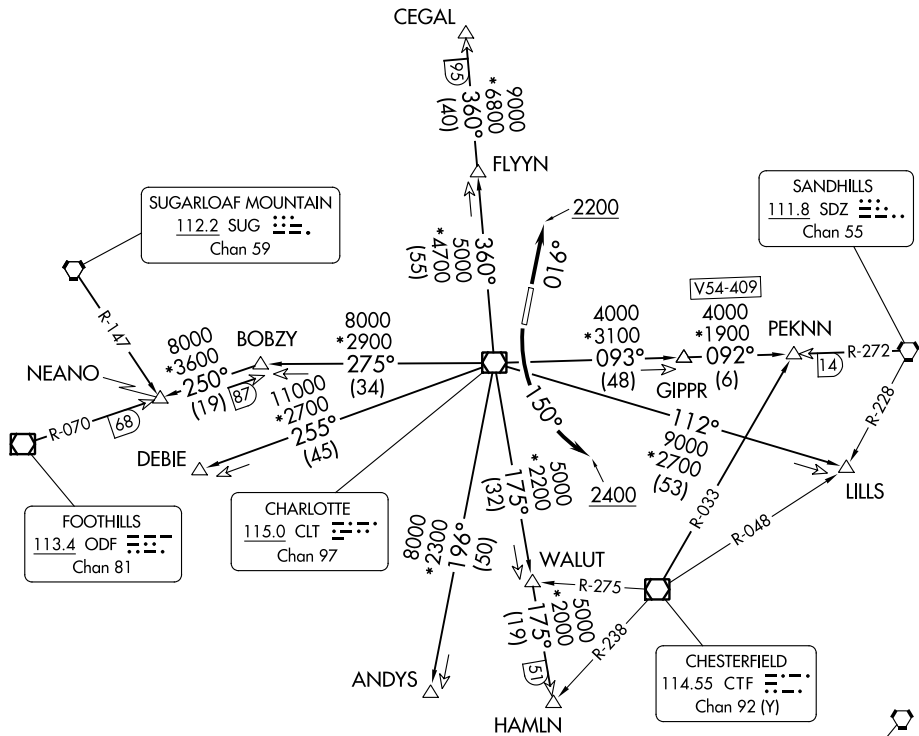
CHARLOTTE DEP CON  
128.325 307.8  
ATIS ★  
133.675  
CLNC DEL  
118.55  
CLNC DEL (when twr closed)  
127.25  
GND CON  
121.85  
CONCORD TOWER ★  
134.65 (CTAF)  
UNICOM  
122.95

**TOP ALTITUDE:  
3000**

RADAR and DME required.

### TAKEOFF MINIMUMS

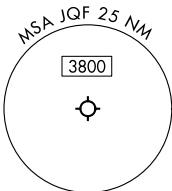
Rwy 2: Standard.  
Rwy 20: Standard with minimum climb of 320' per NM to 2400.



SE-2, 11 JUL 2024 to 08 AUG 2024

SE-2, 11 JUL 2024 to 08 AUG 2024

- NOTE: For propeller aircraft only.
- NOTE: Turboprops: Operate in a manner that will result in best forward speed and climb rate.
- NOTE: Transponder code will be issued via Concord ATCT or Charlotte clearance delivery.



(CONTINUED ON FOLLOWING PAGE)

NOTE: Chart not to scale.

# KNIGHTS THREE DEPARTURE