

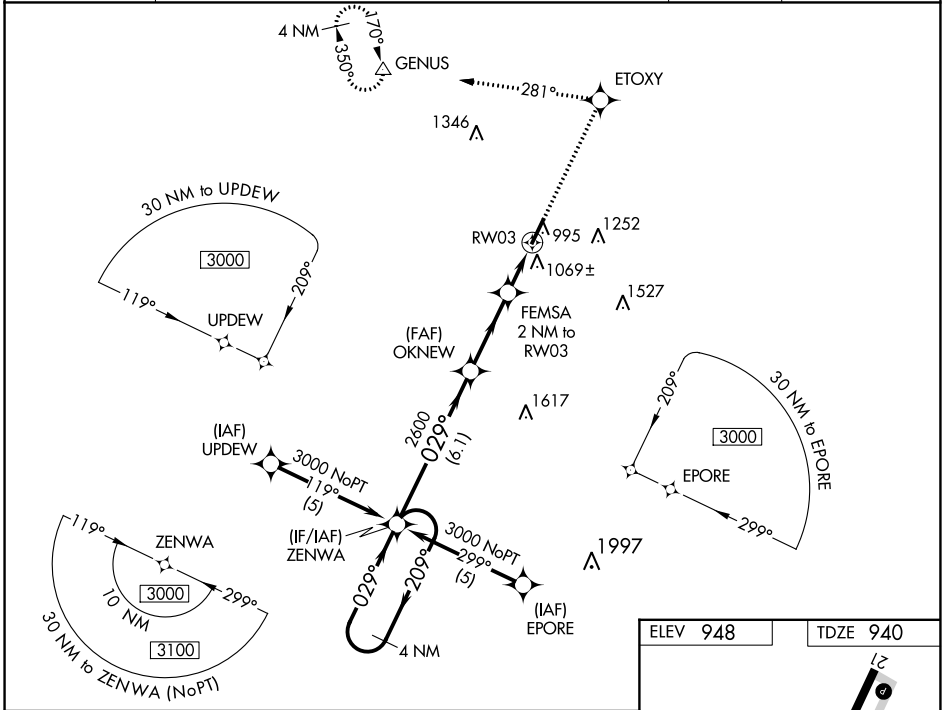
| | | | |
|--|------------------------|---|-------------|
| WAAS CH 56309 W03A | APP CRS 029° | Rwy Idg TDZE 940 Apt Elev 948 | 5498 |
|--|------------------------|---|-------------|

RNAV (GPS) RWY 3
GEORGETOWN-SCOTT COUNTY RGNL (27K)

NA For uncompensated Baro-VNAV systems, LNAV/VNAV NA below -16° C (4° F) or above 47° C (116° F). DME/DME RNP-0.3 NA. When local altimeter setting not received, use Lexington altimeter setting and increase LPV DA to 1178, LNAV/VNAV DA to 1413, and all MDA 40 feet; increase LPV and LNAV/VNAV visibility all Cats and LNAV Cat C and Circling Cat D visibility ¼ mile. Baro-VNAV and VDP NA when using Lexington altimeter setting.

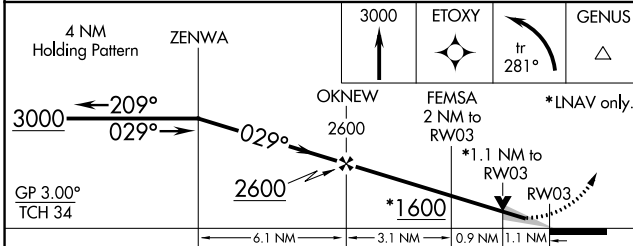
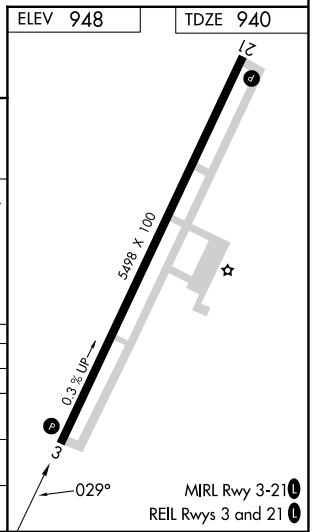
MISSED APPROACH: Climb to 3000 direct ETOXY and left turn on track 281° to GENUS and hold.

| | | | |
|--------------------------|---|----------------------------|---------------------------------|
| AWOS-3 119.975 | LEXINGTON APP CON 120.15 259.3 (040° - 220°) 120.75 298.9 (221° - 039°) | CLNC DEL 127.425 | UNICOM 123.0 (CTAF) 0 |
|--------------------------|---|----------------------------|---------------------------------|



SE-1, 11 JUL 2024 to 08 AUG 2024

SE-1, 11 JUL 2024 to 08 AUG 2024



| CATEGORY | A | B | C | D |
|--------------|--------|-------------|-------------------------------|-------------------------------|
| LPV DA | | 1140-3/4 | 200 (200-3/4) | |
| LNAV/VNAV DA | | 1375-1 1/2 | 435 (500-1 1/2) | |
| LNAV MDA | 1320-1 | 380 (400-1) | | 1320-1 1/4 380 (400-1 1/4) |
| CIRCLING | 1420-1 | 472 (500-1) | 1560-1 3/4 612 (700-1 3/4) | 1660-2 1/4 712 (800-2 1/4) |