

WAAS CH <b>48909</b> W21A	APP CRS <b>209°</b>	Rwy Idg TDZE <b>948</b> Apt Elev <b>948</b>
---------------------------------	------------------------	---

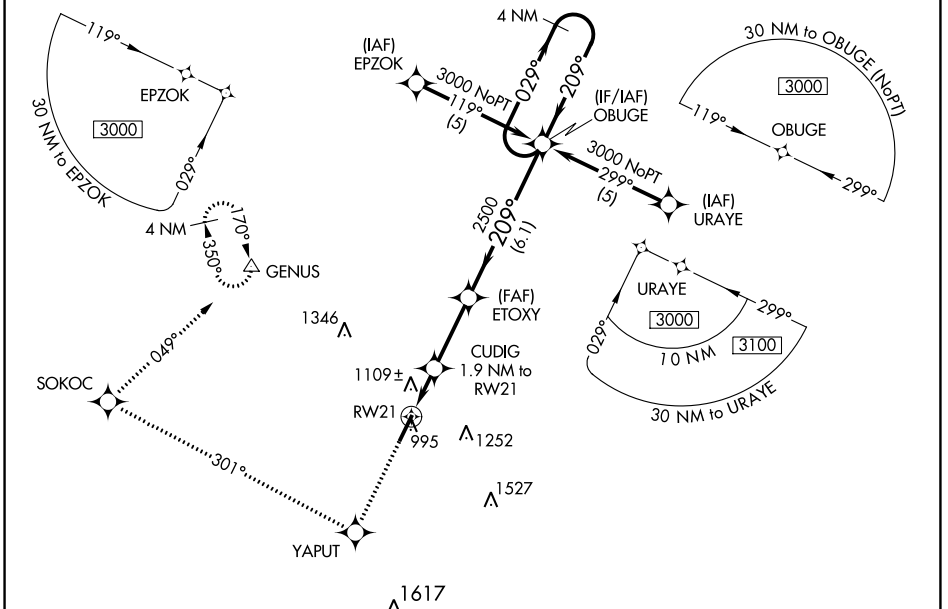
# RNAV (GPS) Z RWY 21

GEORGETOWN-SCOTT COUNTY RGNL (27K)

**NA** For uncompensated Baro-VNAV systems, LNAV/VNAV NA below -16° C (4° F) or above 46° C (114° F). DME/DME RNP-0.3 NA. When local altimeter setting not received, use Lexington altimeter setting and increase LPV DA to 1186, LNAV/VNAV DA to 1460, and all MDA 40 feet; increase LPV all Cats and LNAV Cats C/D and Circling Cat D visibility ¼ SM. Baro-VNAV and VDP NA with Lexington altimeter setting.

**MISSED APPROACH:** Climb to 3000 direct YAPUT and right turn on track 301° to SOKOC and right turn on track 049° to GENUS and hold.

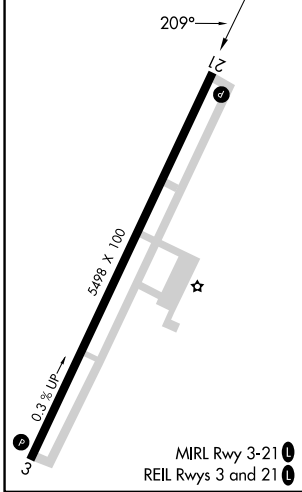
AWOS-3 <b>119,975</b>	LEXINGTON APP CON <b>120.15 259.3 (040° - 220°) 120.75 298.9 (221° - 039°)</b>	CLNC DEL <b>127,425</b>	UNICOM <b>123.0 (CTAF) 0</b>
--------------------------	---	----------------------------	---------------------------------



SE-1, 11 JUL 2024 to 08 AUG 2024

SE-1, 11 JUL 2024 to 08 AUG 2024

ELEV <b>948</b>	TDZE <b>948</b>
-----------------	-----------------



3000	YAPUT	SOKOC	GENUS	4 NM Holding Pattern
↑	✧	↷ Ir 301°	↷ Ir 049°	
OBUGE				
*LNAV only.				
RW21 → 1.2 NM → CUDIG (1.9 NM to RW21) → *1580 → ETOXY (2500) → 0.7 NM → 2.8 NM → 6.1 NM → 3000				
CATEGORY	A	B	C	D
LPV DA	1148-¾		200 (200-¾)	
LNAV/VNAV DA	1422-1¾		474 (500-1¾)	
LNAV MDA	1360-1	412 (500-1)	1360-1¾	412 (500-1¾)
CIRCLING	1420-1	472 (500-1)	1560-1¾ 612 (700-1¾)	1660-2¼ 712 (800-2¼)