

|  |                        |   |             |
|--|------------------------|---|-------------|
| WAAS<br>CH <b>61137</b><br><b>W36A</b> | APP CRS<br><b>001°</b> | Rwy ldg<br>TDZE <b>736</b><br>Apt Elev <b>738</b> | <b>4894</b> |
|--|------------------------|---|-------------|

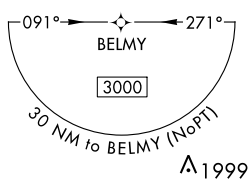
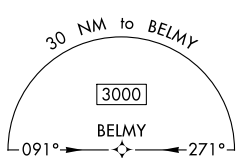
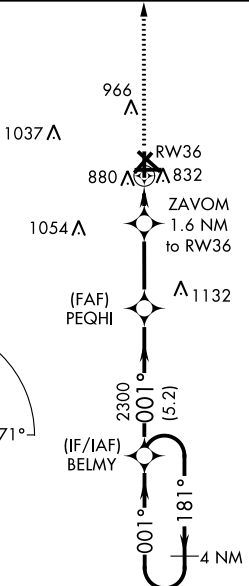
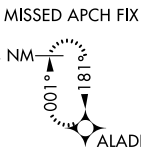
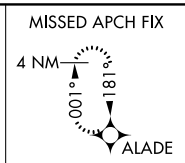
# RNAV (GPS) RWY 36

RANTOUL NTL AVN CNTR-FRANK ELLIOTT FLD (TIP)

**⚠** Baro-VNAV NA when using Champaign Urbana altimeter setting. For uncompensated Baro-VNAV systems, LNAV/VNAV NA below -16°C (4°F) or above 54°C (130°F). DME/DME RNP-0.3 NA. When local altimeter setting not received, use Champaign Urbana altimeter setting and increase all DA 41 feet and all MDA 60 feet; increase LNAV/VNAV all Cats visibility 1/8 mile and Circling Cats C/D visibility 1/4 mile. Helicopter visibility reduction below 3/4 SM NA.

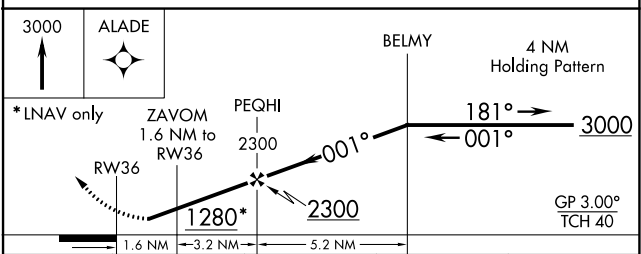
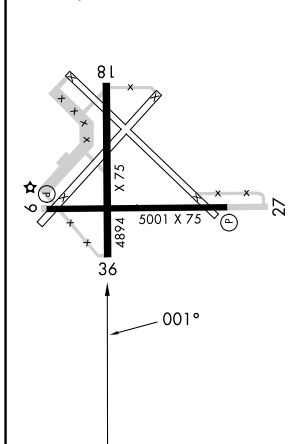
**MISSED APPROACH:**  
Climb to 3000 direct ALADE and hold.

|                          |   |                                 |
|--------------------------|---|---------------------------------|
| AWOS-3<br><b>119.025</b> | CHAMPAIGN APP CON ★<br><b>121.35 285.65</b> | UNICOM<br><b>123.0 (CTAF) 0</b> |
|--------------------------|---|---------------------------------|



|                 |                 |
|-----------------|-----------------|
| ELEV <b>738</b> | TDZE <b>736</b> |
|-----------------|-----------------|

REIL Rwy 9 and 27  
MIRL Rwy 9-27 and 18-36



| CATEGORY          | A                          | B                     | C                             | D                             |
|-------------------|----------------------------|-----------------------|-------------------------------|-------------------------------|
| LPV DA            | 986-1 250 (300-1)          |                       |                               |                               |
| LNAV/VNAV DA      | 1147-1 3/8 411 (500-1 3/8) |                       |                               |                               |
| LNAV MDA          | 1140-1 404 (500-1)         |                       | 1140-1 3/8 404 (500-1 3/8)    |                               |
| <b>C</b> CIRCLING | 1220-1<br>482 (500-1)      | 1280-1<br>542 (600-1) | 1380-1 3/4<br>642 (700-1 3/4) | 1420-2 1/4<br>682 (700-2 1/4) |

EC-3, 11 JUL 2024 to 08 AUG 2024

EC-3, 11 JUL 2024 to 08 AUG 2024