

WAAS CH 62937 W09A	APP CRS 091°	Rwy Idg TDZE 735 Apt Elev 738	5001
--	------------------------	---	-------------

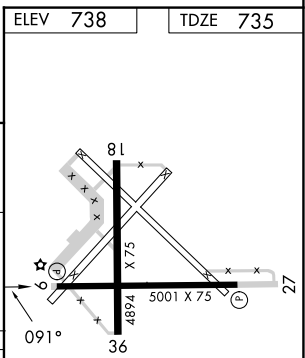
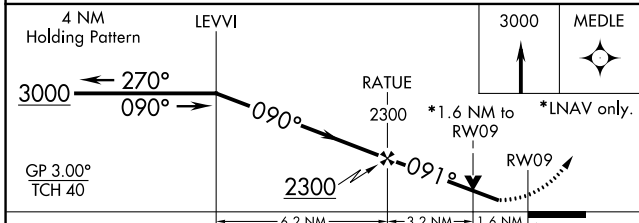
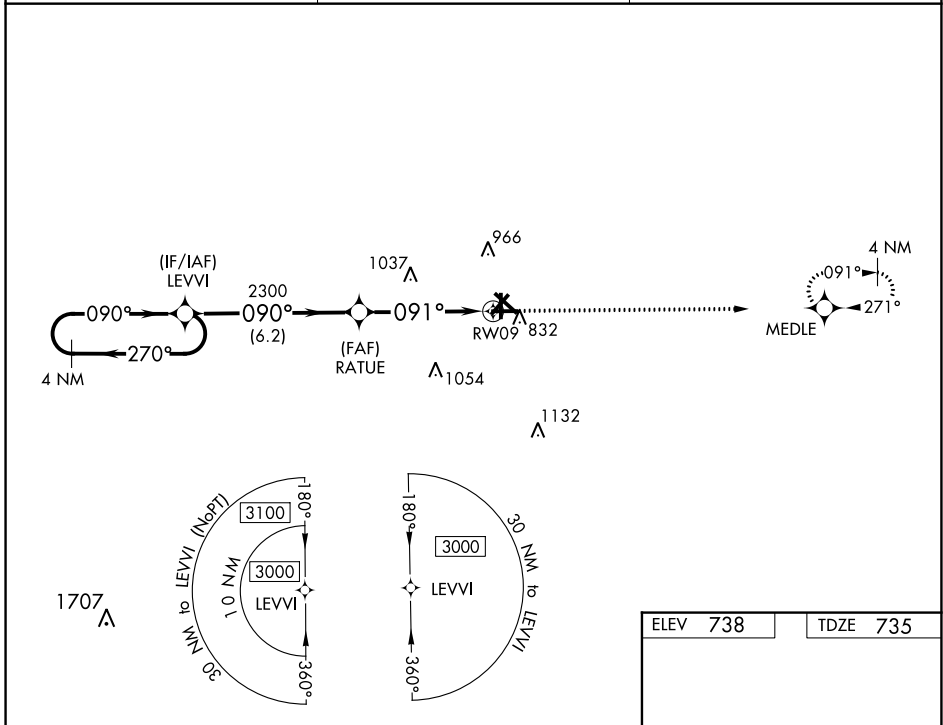
RNAV (GPS) RWY 9

RANTOUL NTL AVN CNTR-FRANK ELLIOTT FLD (TIP)

⚠ For uncompensated Baro-VNAV systems, LNAV/VNAV NA below -16°C (4°F) or above 54°C (130°F).
DME/DME RNP-0.3 NA. When local altimeter setting not received, use Champaign Urbana altimeter setting and increase DA 41 feet and all MDA 60 feet; increase LNAV/VNAV all Cats and LNAV Cats C/D visibility 1/8 mile and Circling Cats C/D visibility 1/4 mile. Baro-VNAV and VDP NA when using Champaign Urbana altimeter setting. Helicopter visibility reduction below 3/4 SM NA.

MISSED APPROACH:
Climb to 3000 direct MEDLE and hold.

AWOS-3 119.025	CHAMPAIGN APP CON ★ 121.35 285.65	UNICOM 123.0 (CTAF) 0
--------------------------	---	---------------------------------



CATEGORY	A	B	C	D
LPV DA	985-1		250 (300-1)	
LNAV/VNAV DA	1167-1½		432 (500-1½)	
LNAV MDA	1280-1 545 (600-1)		1280-1½ 545 (600-1½)	
C CIRCLING	1280-1 542 (600-1)		1380-1¾ 642 (700-1¾) 1420-2¼ 682 (700-2¼)	

RNAV (GPS) RWY 9

EC-3, 11 JUL 2024 to 08 AUG 2024

EC-3, 11 JUL 2024 to 08 AUG 2024