

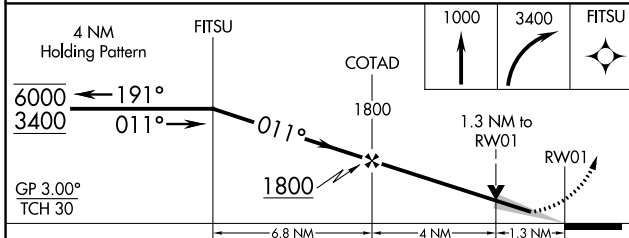
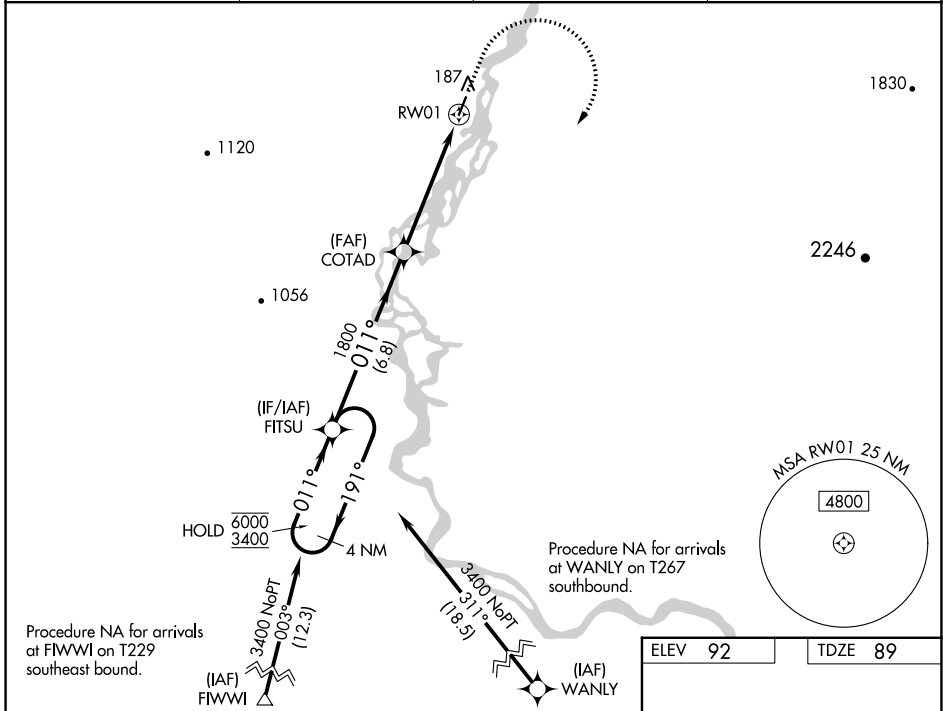
WAAS CH <b>61142</b> <b>W01A</b>	APP CRS <b>011°</b>	Rwy Idg <b>3992</b> TDZE <b>89</b> Apt Elev <b>92</b>
--	------------------------	---

# RNAV (GPS) RWY 1

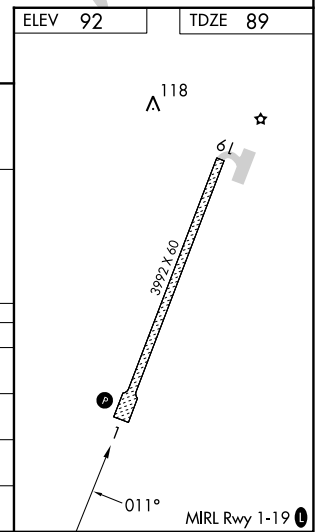
NOATAK (WTK)(PAWN)

RNP APCH-GPS.	MISSED APPROACH: Climb to 1000 then climbing right turn to 3400 direct FITSU and hold.
<p>▼ For uncompensated Baro-VNAV systems, procedure NA below -22°C or above 54°C. Circling Rwy 19 NA at night.</p>	

AWOS-3P <b>135.75</b>	ANCHORAGE CENTER <b>119.2 263.0</b>	KOTZEBUE RADIO <b>122.4</b>	UNICOM <b>122.8 (CTAF) 0</b>
--------------------------	--	--------------------------------	---------------------------------



CATEGORY	A	B	C	D
LPV DA	339-1		250 (300-1)	
LNAV/VNAV DA	339-1		250 (300-1)	
LNAV MDA	520-1	431 (500-1)	520-1¼	431 (500-1¼)
CIRCLING	520-1 428 (500-1)	560-1 468 (500-1)	560-1½ 468 (500-1½)	820-2¼ 728 (800-2¼)



AK, 11 JUL 2024 to 05 SEP 2024

AK, 11 JUL 2024 to 05 SEP 2024