

WAAS CH <b>78044</b> <b>W23A</b>	APP CRS <b>228°</b>	Rwy ldg TDZE Apt Elev	<b>5564</b> <b>1576</b> <b>1576</b>
--	------------------------	-----------------------------	---

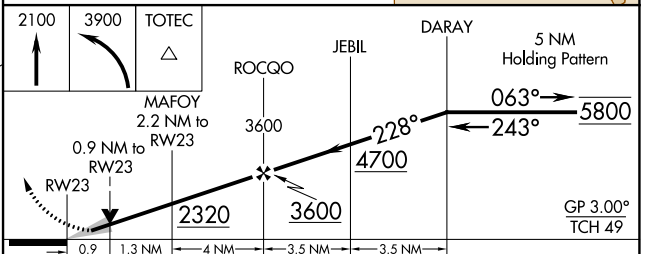
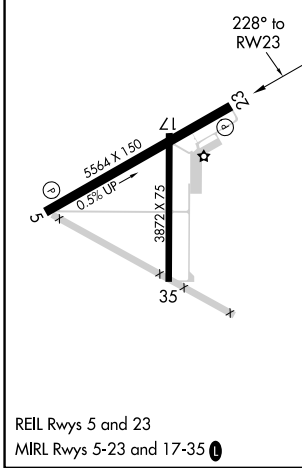
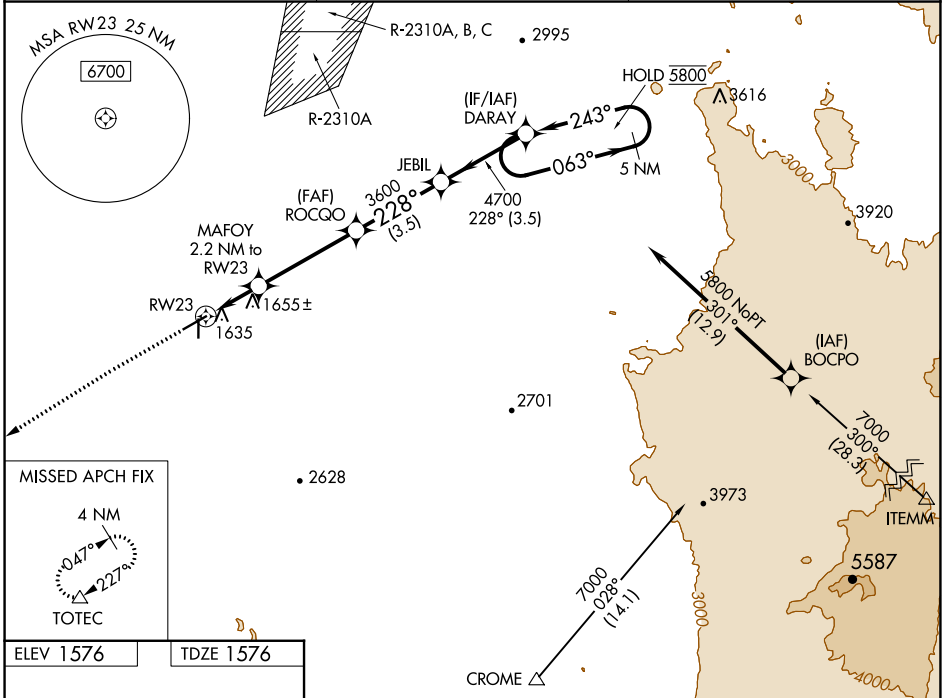
# RNAV (GPS) RWY 23

COOLIDGE MUNI (P08)

RNP APCH-GPS. MISSED APPROACH: Climb to 2100 then climbing left turn to 3900 direct TOTEC and hold.

⚠ Circling Rwy 17, 35 NA at night. For uncompensated Baro-VNAV systems, LNAV/VNAV NA below -18°C or above 54°C.

AWOS-3PT <b>119.35</b>	ALBUQUERQUE CENTER <b>125.4 269.3</b>	UNICOM <b>123.075</b> (CTAF) <b>1</b>
---------------------------	--	--



CATEGORY	A	B	C	D
LPV DA	1826- <sup>3</sup> / <sub>4</sub>	250 (300- <sup>3</sup> / <sub>4</sub> )		NA
LNAV/VNAV DA	1826- <sup>3</sup> / <sub>4</sub>	250 (300- <sup>3</sup> / <sub>4</sub> )		NA
LNAV MDA	1920-1	344 (400-1)		NA
<b>C</b> CIRCLING	2100-1	524 (600-1)		NA

SW-4, 11 JUL 2024 to 08 AUG 2024

SW-4, 11 JUL 2024 to 08 AUG 2024