

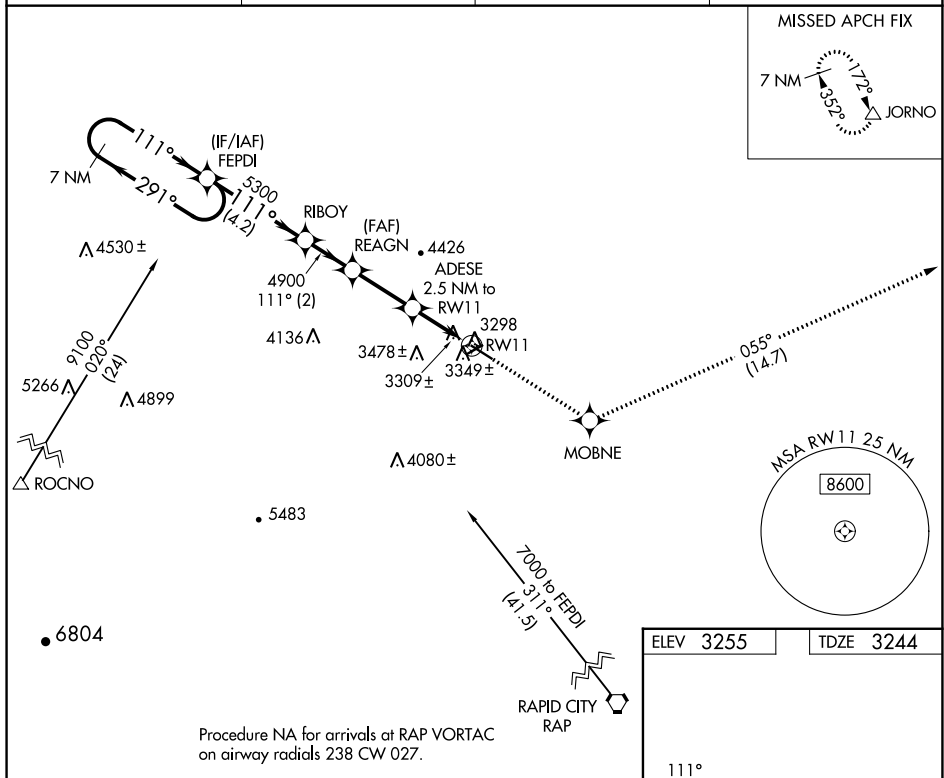
WAAS CH <b>53432</b> <b>W11A</b>	APP CRS <b>111°</b>	Rwy Idg TDZE Apt Elev	<b>5100</b> <b>3244</b> <b>3255</b>
--	------------------------	-----------------------------	---

# RNAV (GPS) RWY 11

STURGIS MUNI (49B)

RNP APCH.	MISSED APPROACH: Climb to 7000 direct MOBNE and on track 055° to JORNO and hold.
<p>▼ Use Ellsworth AFB altimeter setting; when not received, use Spearfish altimeter setting and increase all MDA 100 feet, increase LP Cat C visibility 3/8 SM and LNAV Cat C visibility 1/4 SM. Rwy 11 helicopter visibility reduction below 3/4 SM NA.</p> <p>▲ NA</p>	

AWOS-3P <b>119.275</b>	ELLSWORTH APP CON * <b>119.5 259.1</b>	GCO <b>121.725</b>	UNICOM <b>122.8</b> (CTAF) <b>0</b>
---------------------------	---	-----------------------	--



NC-1, 11 JUL 2024 to 08 AUG 2024

NC-1, 11 JUL 2024 to 08 AUG 2024

Procedure NA for arrivals at RAP VORTAC on airway radials 238 CW 027.

ELEV 3255	TDZE 3244
-----------	-----------

VGSi and descent angles not coincident (VGSi Angle 3.00/TCH 22).																		
7 NM Holding Pattern	FEPDI	RIBOY	REAGN															
6600	5300	4900	4080															
291°	111°	111°	3.00° TCH 50															
4.2 NM	2 NM	2.5 NM	2.5 NM															
7000 MOBNE tr 055° JORNO	ADESE 2.5 NM to RW11																	
<table border="1"> <tr> <th>CATEGORY</th> <th>A</th> <th>B</th> <th>C</th> <th>D</th> </tr> <tr> <td>LP MDA</td> <td colspan="2">3620-1 376 (400-1)</td> <td></td> <td>NA</td> </tr> <tr> <td>LNAV MDA</td> <td>3660-1</td> <td>416 (500-1)</td> <td>3660-1 1/8 416 (500-1 1/8)</td> <td>NA</td> </tr> </table>				CATEGORY	A	B	C	D	LP MDA	3620-1 376 (400-1)			NA	LNAV MDA	3660-1	416 (500-1)	3660-1 1/8 416 (500-1 1/8)	NA
CATEGORY	A	B	C	D														
LP MDA	3620-1 376 (400-1)			NA														
LNAV MDA	3660-1	416 (500-1)	3660-1 1/8 416 (500-1 1/8)	NA														

