

WAAS CH <b>90321</b> <b>W29A</b>	APP CRS <b>292°</b>	Rwy Idg TDZE Apt Elev	<b>5100</b> <b>3231</b> <b>3255</b>
--	------------------------	-----------------------------	---

# RNAV (GPS) RWY 29

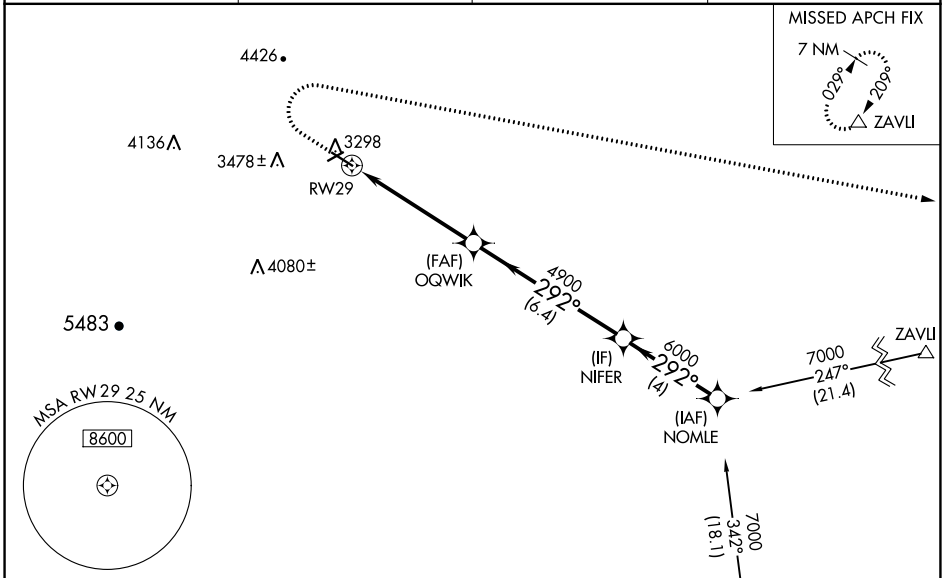
STURGIS MUNI (49B)

**RNP APCH.**

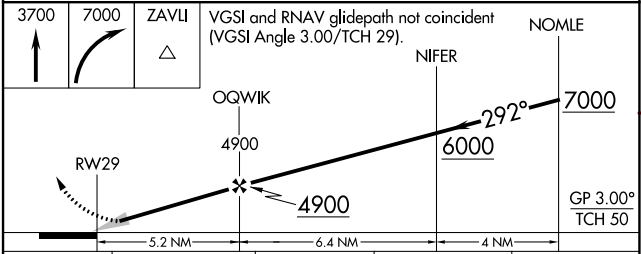
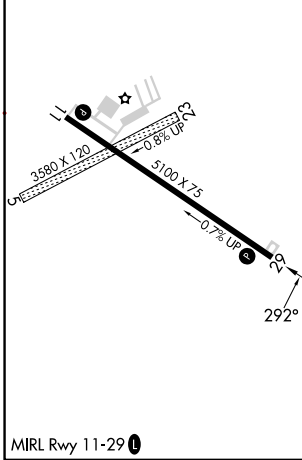
**NA** Baro-VNAV NA. Use Ellsworth AFB altimeter setting, when not received, use Spearfish altimeter setting and increase all DA 87 feet and all MDA 100 feet and increase LPV Cat A/B visibility 1/4 mile, and LPV (with climb gradient) Cat C visibility 1/2 mile.  
\*Missed approach requires minimum climb of 364 feet per NM to 4900.

**MISSED APPROACH:** Climb to 3700 then climbing right turn to 7000 direct ZAVLI and hold.

AWOS-3P <b>119.275</b>	ELLSWORTH APP CON * <b>119.5 259.1</b>	GCO <b>121.725</b>	UNICOM <b>122.8 (CTAF)</b>
---------------------------	---	-----------------------	-------------------------------



ELEV 3255	TDZE 3231
-----------	-----------



CATEGORY	A	B	C	D
LPV DA*	3532-1 301 (300-1)			NA
LPV DA	3532-1 301 (300-1)		4073-3 842 (900-3)	NA
LNAV/VNAV DA	3532-1 301 (300-1)		3986-3 755 (800-3)	NA
LNAV MDA	3640-1 409 (400-1)		4280-3 1049 (1100-3)	NA

NC-1, 11 JUL 2024 to 08 AUG 2024

NC-1, 11 JUL 2024 to 08 AUG 2024