

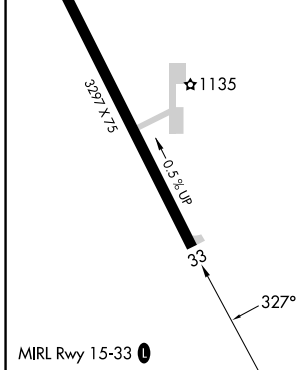
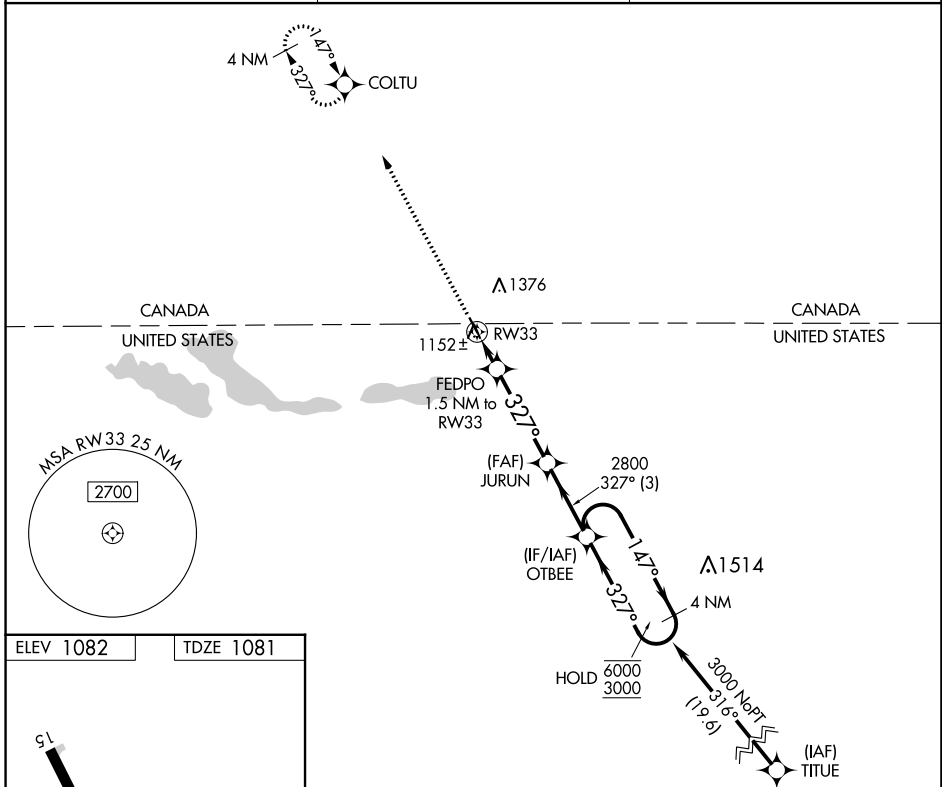
APP CRS	Rwy Idg	3297
327°	TDZE	1081
	Apt Elev	1082

RNAV (GPS) RWY 33

PINEY PINECREEK BORDER (48Y)

RNP APCH-GPS.	MISSED APPROACH: Climb to 3700 direct COLTU and hold.
<p>▼ Use Roseau altimeter setting; when not received, use</p> <p>▲ NA Warroad altimeter setting and increase all MDA 40 feet.</p>	

ROX AWOS-3 118.075	MINNEAPOLIS CENTER 134.75 251.1	UNICOM 122.8 (CTAF) 0
------------------------------	---	---------------------------------



3700	COLTU	JURUN	OTBEE	4 NM Holding Pattern
↑	✧			147° → 6000
				← 327° 3000
				327°
				2800
				1580
				1.5 NM
				3.8 NM
				3 NM
CATEGORY	A	B	C	D
LNAV MDA	1440-1	359 (400-1)		NA
CIRCLING	1500-1 418 (500-1)	1780-1 698 (700-1)		NA

NC-1, 11 JUL 2024 to 08 AUG 2024

NC-1, 11 JUL 2024 to 08 AUG 2024