

APP CRS	Rwy Idg	<b>3200</b>
<b>099°</b>	TDZE	<b>400</b>
	Apt Elev	<b>400</b>

# RNAV (GPS) RWY 10

WHITFORDS (B16)

RNP APCH.

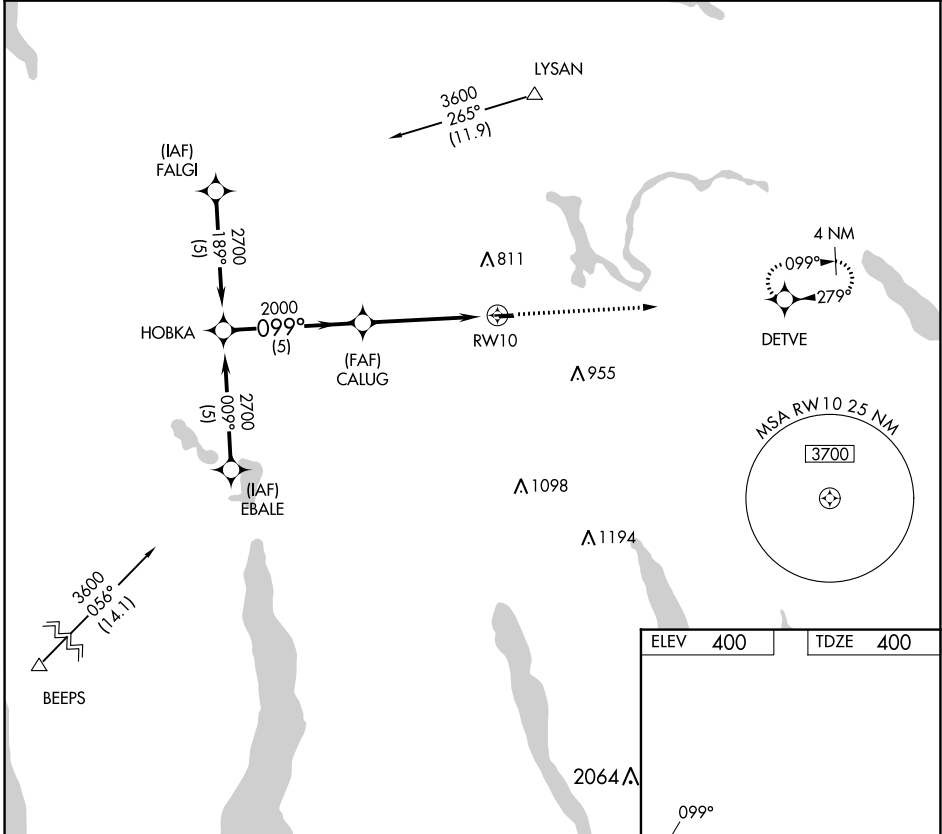
**▼** Use Syracuse altimeter setting. Procedure NA at night.  
**▲ NA** Rwy 10 helicopter visibility reduction below 1 SM NA.

MISSED APPROACH: Climb to 3000 direct DETVE WP and hold.

SYRACUSE APP CON  
**126.125 269.125**

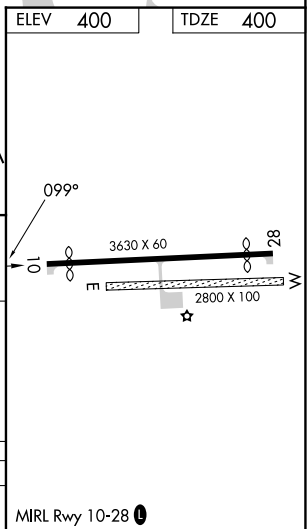
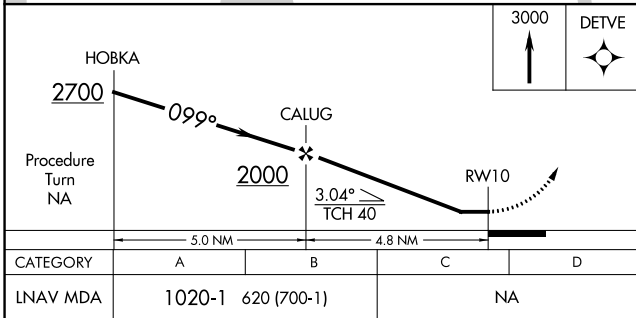
UNICOM  
**122.8 (CTAF)**

**122.70**



NE-2, 11 JUL 2024 to 08 AUG 2024

NE-2, 11 JUL 2024 to 08 AUG 2024



CATEGORY	A	B	C	D
LNAV MDA	1020-1	620 (700-1)	NA	