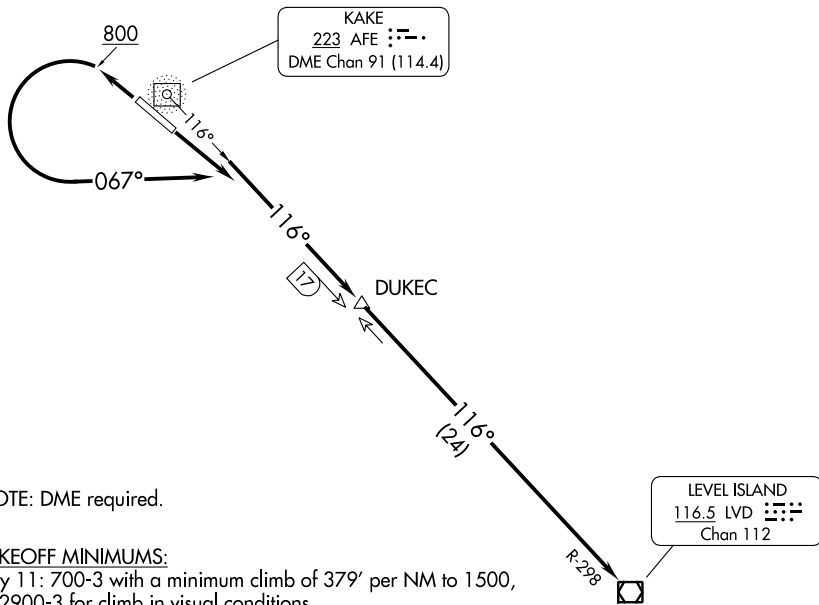


# KAKE THREE DEPARTURE (OBSTACLE)

ANCHORAGE CENTER  
118.0 132.175



NOTE: DME required.

**TAKEOFF MINIMUMS:**

- Rwy 11: 700-3 with a minimum climb of 379' per NM to 1500, or 2900-3 for climb in visual conditions.
- Rwy 29: 700-3 with a minimum climb of 390' per NM to 1100, or 2900-3 for climb in visual conditions.

**TAKEOFF OBSTACLE NOTES:**

- Rwy 11: Terrain beginning 644' from DER, 635' left of centerline, up to 399' MSL. Trees beginning 3751' from DER, 982' left of centerline, 148' AGL/647' MSL.
- Rwy 29: Treeline beginning 152' from DER, 198' left of centerline, up to 148' AGL/347' MSL. Tower 6356' from DER, 175' left of centerline, 191' AGL/328' MSL. Ship 1645' from DER, 916' left of centerline, up to 208' AGL/208' MSL.

NOTE: Chart not to scale.

## DEPARTURE ROUTE DESCRIPTION

**TAKEOFF RWY 11:** Climb to 5000 on 116° bearing from AFE NDB/DME to DUKEC/17 DME, then on 116° course to LVD VOR/DME before proceeding on course, or climb in visual conditions to cross AFE NDB/DME at or above 2900 before proceeding on course. When executing VCOA, notify ATC prior to departure.

**TAKEOFF RWY 29:** Climb to 800, then climbing left turn to 5000 on heading 067° and 116° bearing from AFE NDB/DME to DUKEC/17 DME, then on 116° course to LVD VOR/DME before proceeding on course, or climb in visual conditions to cross AFE NDB/DME at or above 2900 before proceeding on course. When executing VCOA, notify ATC prior to departure.

# KAKE THREE DEPARTURE (OBSTACLE)