

NDB/DME AFE 223	APP CRS 085°	Rwy Idg 4000 TDZE 166 Apt Elev 172
Chan 91 (114.4)		

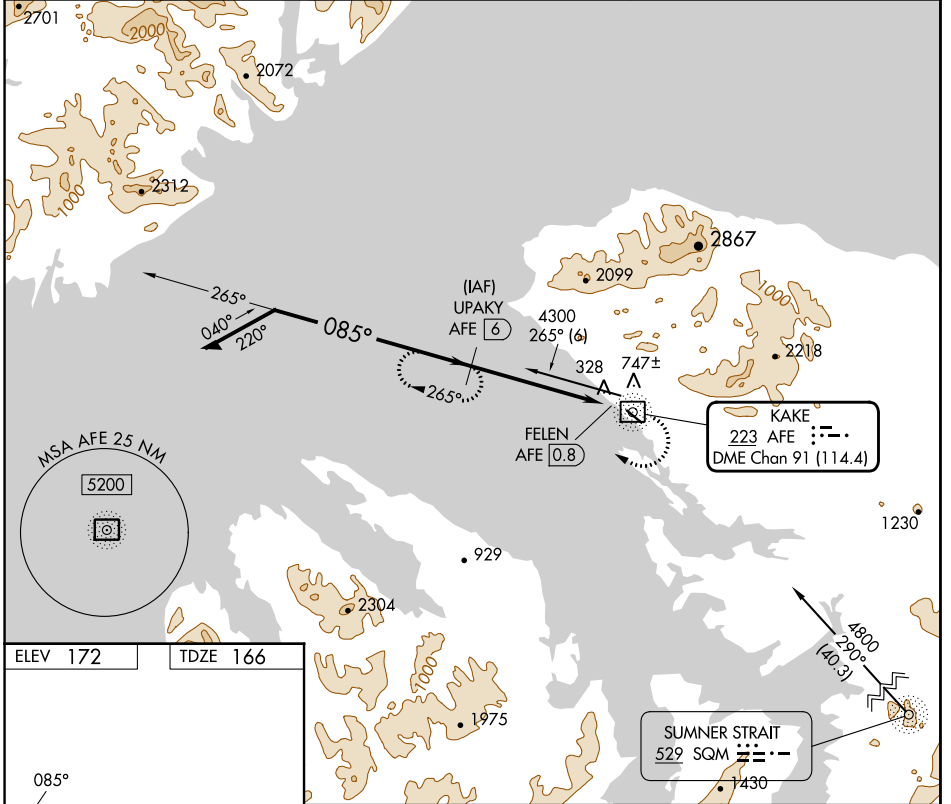
NDB/DME RWY 11

KAKE (AFE)(PAFE)

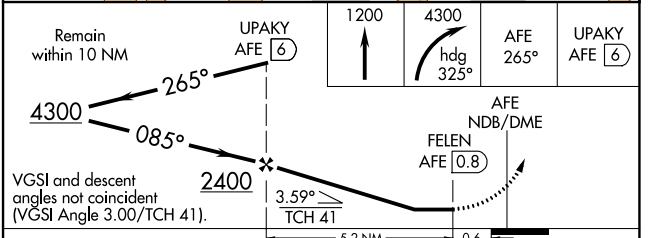
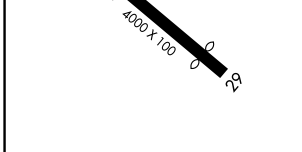
⚠ Circling NA north of Rwy 11-29. When local altimeter setting not received use Petersburg James A Johnson altimeter setting and increase all MDAs 100 feet, and increase Cats B and C visibility ¼ mile. Circling Rwy 29 NA at night. Rwy 11 helicopter visibility reduction below ¾ SM NA.

MISSED APPROACH: Climb to 1200 then climbing right turn to 4300 via heading 325° and 265° bearing from AFE NDB/DME to UPAKY/6 DME and hold.

AWOS-3P 135.25	ANCHORAGE CENTER 118.0 132.175	SITKA RADIO 122.65 121.3	CTAF 122.9 0
--------------------------	--	------------------------------------	------------------------



ELEV 172	TDZE 166
----------	----------



CATEGORY	A		B		C		D
	S-11	1100-1¼	934 (1000-1¼)	1100-2¾	934 (1000-2¾)	1100-2¾	928 (1000-2¾)
CIRCLING	1100-1¼	928 (1000-1¼)	1100-2¾	928 (1000-2¾)	1100-2¾	928 (1000-2¾)	NA

REIL Rwy 11 0
MIRL Rwy 11-29 0

KAKE, ALASKA
Amdt 1A 19JUL18

56°58'N-133°55'W

NDB/DME RWY 11

KAKE (AFE)(PAFE)

AK, 11 JUL 2024 to 05 SEP 2024

AK, 11 JUL 2024 to 05 SEP 2024