

WAAS CH <b>45728</b> <b>W27A</b>	APP CRS <b>272°</b>	Rwy Idg TDZE <b>1487</b> Apt Elev <b>1487</b>	<b>4401</b> <b>1487</b> <b>1487</b>
--	------------------------	---	---

# RNAV (GPS) RWY 27

TOMAHAWK RGNL (TKV)

**⚠** Rwy 27 helicopter visibility reduction below 3/4 SM NA. DME/DME RNP-0.3 NA.  
**⚠** When local altimeter setting not received, use Rhinelander altimeter setting:  
 increase all MDA 60 feet and visibility LP Cat C and D 1/8 SM and  
 LNAV Cat C and D and Circling Cat D 1/4 SM.

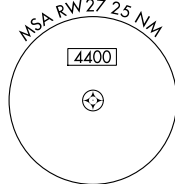
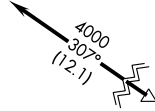
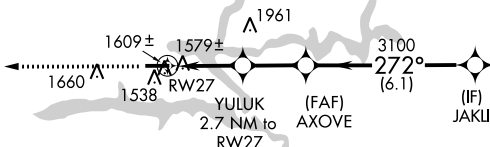
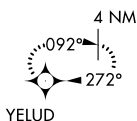
**MISSED APPROACH:**  
 Climb to 4000 direct  
 YELUD and hold.

AWOS-3  
**118.250**

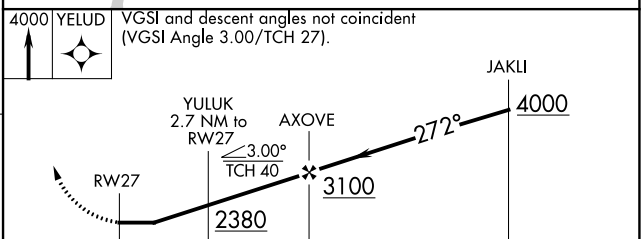
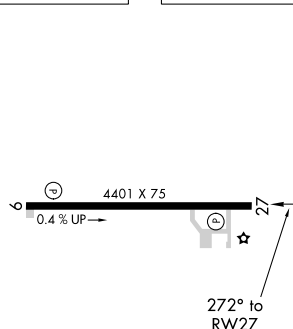
MINNEAPOLIS CENTER  
**133.65 281.5**

UNICOM  
**122.8 (CTAF) 0**

Procedure NA for arrival on RHI  
 VOR/DME airway radials 138 CW 241.



ELEV 1487 TDZE 1487



CATEGORY	A	B	C	D
LP MDA		1840-1	353 (400-1)	
LNAV MDA		1860-1	373 (400-1)	
CIRCLING	1920-1	2020-1	2020-1½	2320-2¾
	433 (500-1)	533 (600-1)	533 (600-1½)	833 (900-2¾)

MIRL Rwy 9-27 0  
 REIL Rws 9 and 27 0

EC-3, 11 JUL 2024 to 08 AUG 2024

EC-3, 11 JUL 2024 to 08 AUG 2024