

NDB FOZ <b>345</b>	APP CRS <b>160°</b>	Rwy Idg TDZE Apt Elev	<b>3998</b> <b>1351</b> <b>1351</b>
-----------------------	------------------------	-----------------------------	---

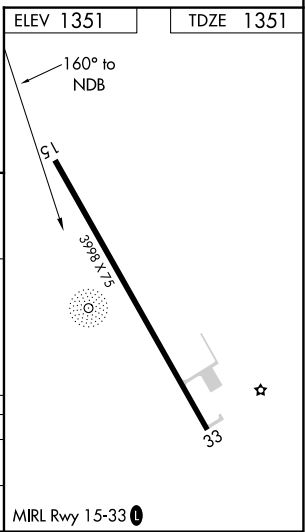
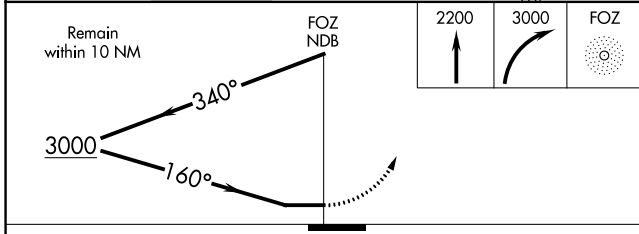
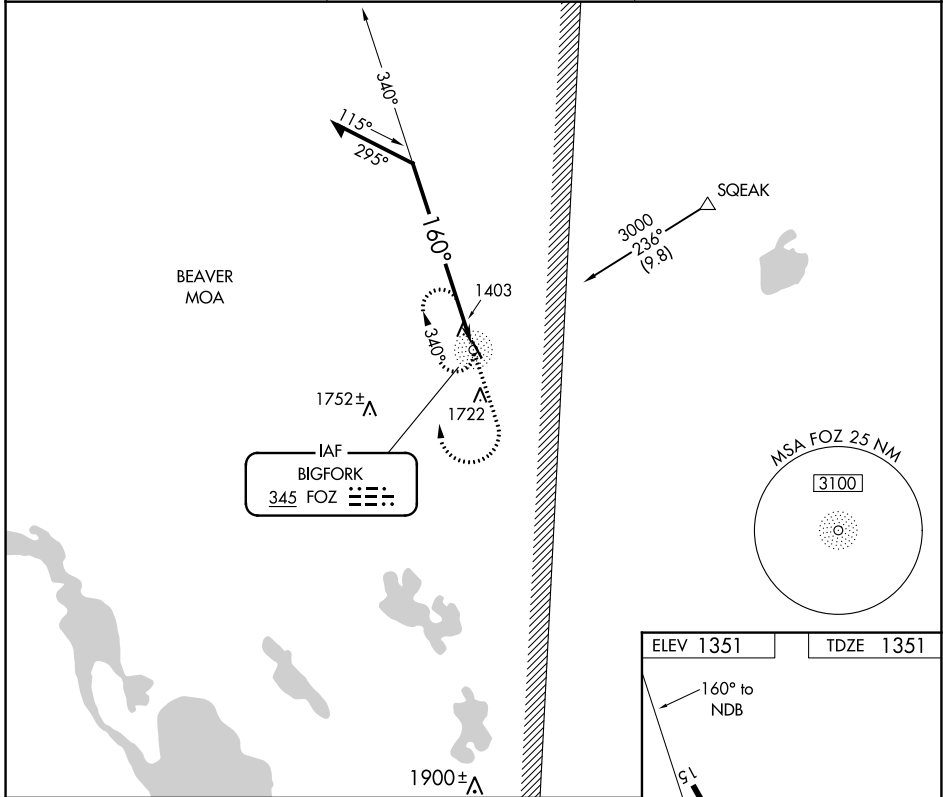
# NDB RWY 15

BIGFORK MUNI (F0Z)

**▼** Procedure not authorized when BEAVER MOA is active. Night landing Rwy 33 NA. Helicopter visibility reduction below 3/4 SM NA. **▲ NA** When local altimeter setting not received, use Grand Rapids altimeter setting and increase all MDA 100 feet.

**MISSED APPROACH:** Climb to 2200 then climbing right turn to 3000 direct FOZ NDB and hold.

AWOS-3PT <b>118.025</b>	MINNEAPOLIS CENTER <b>127.9 281.45</b>	CTAF <b>122.9 0</b>
----------------------------	---	------------------------



CATEGORY	A	B	C	D
S-15	1840-1	489 (500-1)		NA
CIRCLING	1840-1 489 (500-1)	2040-1 689 (700-1)		NA

NC-1, 11 JUL 2024 to 08 AUG 2024

NC-1, 11 JUL 2024 to 08 AUG 2024