

WAAS CH <b>53627</b> <b>W29A</b>	APP CRS <b>294°</b>	Rwy Idg TDZE Apt Elev	<b>3900</b> <b>2130</b> <b>2131</b>
--	------------------------	-----------------------------	---

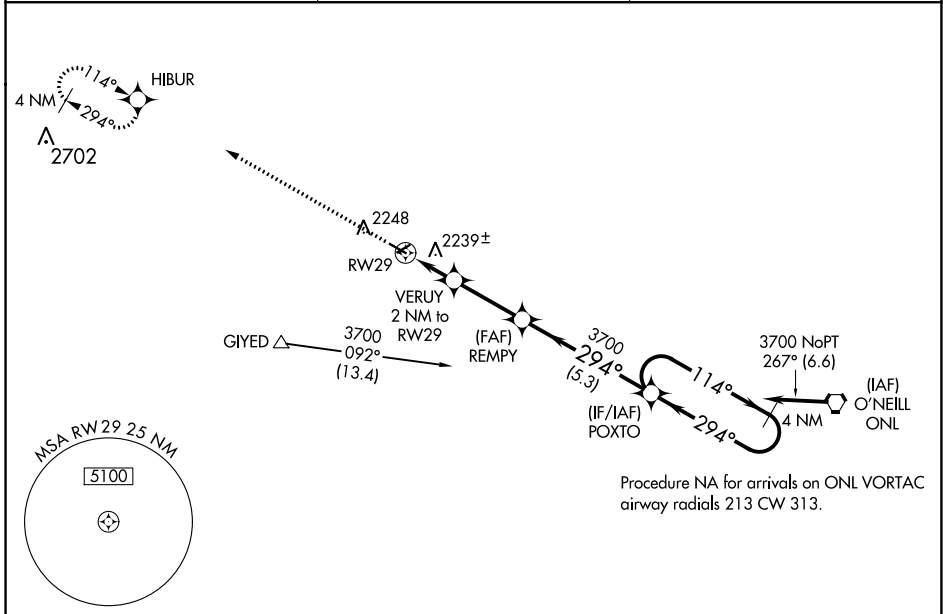
# RNAV (GPS) RWY 29

STUART-ATKINSON MUNI (8V2)

**NA** Baro-VNAV NA. Use O'Neill altimeter setting; when not received, use Ainsworth altimeter setting and increase all DA 110 feet and all MDA 120 feet. Increase LPV and LNAV/VNAV all Cats visibility 3/8 mile. DME/DME RNP-0.3 NA.

MISSED APPROACH: Climb to 3900 direct HIBUR and hold.

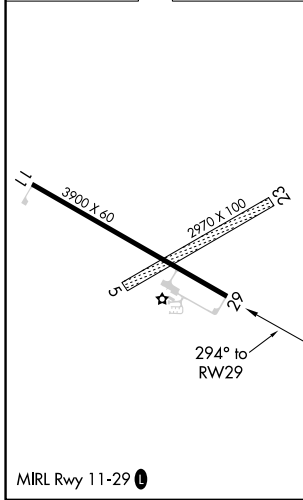
ONL AWOS-3 <b>121.125</b>	MINNEAPOLIS CENTER <b>128.0 257.95</b>	CTAF <b>122.90</b>
------------------------------	---	-----------------------



NC-2, 11 JUL 2024 to 08 AUG 2024

NC-2, 11 JUL 2024 to 08 AUG 2024

ELEV 2131	TDZE 2130
-----------	-----------



	3900	HIBUR	REMPY	POXTO	4 NM Holding Pattern
			3700		
	*LNAV only	VERUY 2 NM to RWY 29	2800*	294°	114° → 3700
		RWY 29	2800*	← 294°	GP 3.00° TCH 40
		2 NM	2.8 NM	5.3 NM	
CATEGORY	A	B	C	D	
LPV DA	2432-1	302 (400-1)			NA
LNAV/VNAV DA	2457-1 1/8	327 (400-1 1/8)			NA
LNAV MDA	2560-1	430 (500-1)			NA
CIRCLING	2620-1 489 (500-1)	2640-1 509 (600-1)			NA