

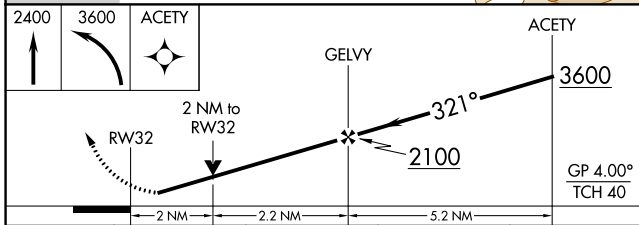
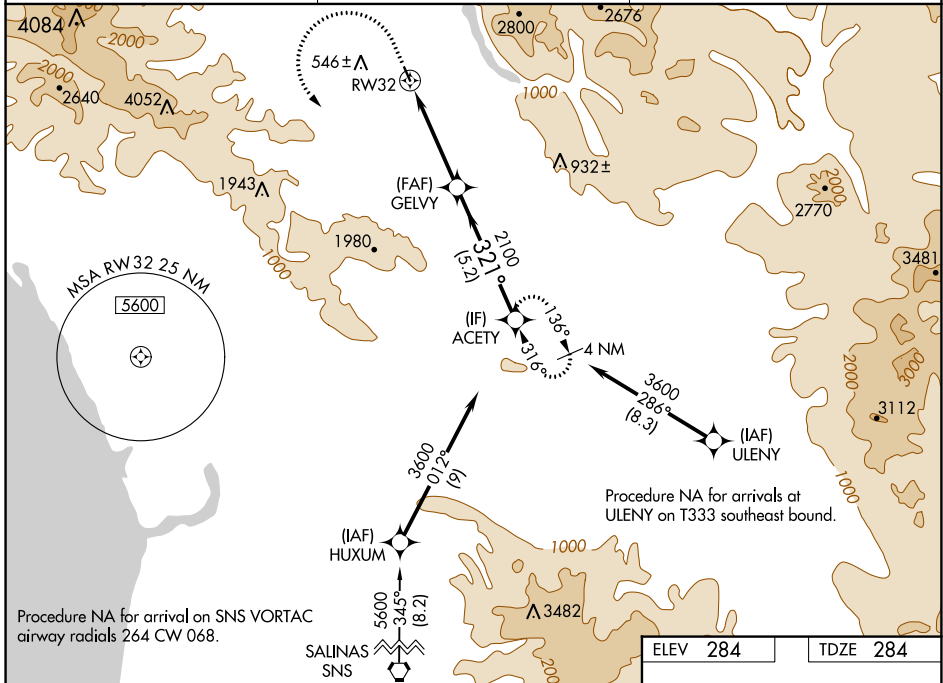
WAAS CH 56444 W32A	APP CRS 321°	Rwy Idg TDZE 284 Apt Elev 284	3095 284 284
--	------------------------	---	---

RNAV (GPS) RWY 32

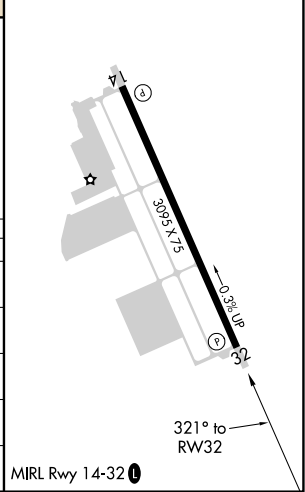
SAN MARTIN (E16)

RNP APCH - GPS.	MISSED APPROACH: Climb to 2400 then climbing left turn to 3600 direct ACETY and hold. *Missed approach requires minimum climb of 260 feet per NM to 2400.
<p>▼ Circling NA southwest of Rwy 14-32. Rwy 32 helicopter visibility reduction below $\frac{3}{4}$ SM NA.</p>	

AWOS-3P 118.35	NORCAL APP CON 124.525 348.675	UNICOM 122.7 (CTAF) 0
--------------------------	--	---------------------------------



ELEV 284	TDZE 284
----------	----------



CATEGORY	A	B	C	D
LPV DA*	600- $\frac{7}{8}$	316 (400- $\frac{7}{8}$)		NA
LPV DA	954-1 $\frac{7}{8}$	670 (700-1 $\frac{7}{8}$)		NA
LNAV MDA*	1060-1 776 (800-1)	1060-1 $\frac{1}{4}$ 776 (800-1 $\frac{1}{4}$)		NA
LNAV MDA	1320-1 $\frac{1}{4}$ 1036 (1100-1 $\frac{1}{4}$)	1320-1 $\frac{1}{2}$ 1036 (1100-1 $\frac{1}{2}$)		NA
C CIRCLING	1320-1 $\frac{1}{4}$ 1036 (1100-1 $\frac{1}{4}$)	1320-1 $\frac{1}{2}$ 1036 (1100-1 $\frac{1}{2}$)		NA

SW-2, 11 JUL 2024 to 08 AUG 2024

SW-2, 11 JUL 2024 to 08 AUG 2024