

WAAS CH <b>93640</b> <b>W25A</b>	APP CRS <b>249°</b>	Rwy Idg TDZE Apt Elev	<b>5005</b> <b>615</b> <b>615</b>
--	------------------------	-----------------------------	---

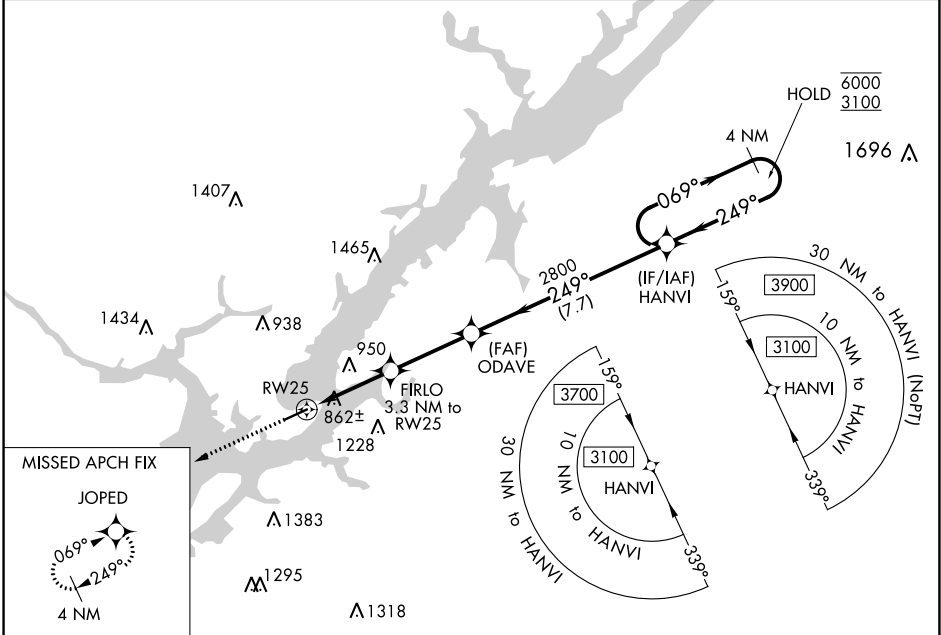
# RNAV (GPS) RWY 25

GUNTERSVILLE MUNI/JOE STARNES FLD (8A.1)

RNP APCH.  
 ⚠ NA Circling NA to Rwy 6 and 24. Circling Rwy 7 NA at night.  
 ⚠ NA Rwy 25 helicopter visibility reduction below 3/4 SM NA.  
 Baro-VNAV NA. Use Scottsboro altimeter setting.

MISSED APPROACH: Climb to 3000 direct JOPED and hold.

4A6 AWOS-3PT <b>120.125</b>	HUNTSVILLE APP CON ★ <b>125.6 354.1</b>	UNICOM <b>122.8 (CTAF) 0</b>
--------------------------------	--	---------------------------------

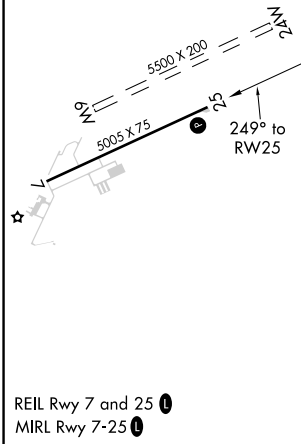


MISSED APCH FIX

JOPED



ELEV 615	TDZE 615
----------	----------



3000	JOPED	VGSI and RNAV glidepath not coincident (VGSI angle 3.35/TCH 50).		4 NM Holding Pattern
↑	✧	ODAVE 2800	HANVI	
*LNAV only.	FIRLO 3.3 NM to RW25	2800	249°	069° → 6000 / ← 249° 3100
RW25	1740*	2800		GP 3.10° / TCH 50
	3.3 NM	3.2 NM	7.7 NM	
CATEGORY	A	B	C	D
LPV DA	1026-1 3/8 411 (500-1 3/8)			
LNAV/VNAV DA	1224-2 609 (700-2)			
LNAV MDA	1260-1	645 (700-1)	1260-2	645 (700-2)
<b>C</b> CIRCLING	1360-1 / 745 (800-1)	1380-1 / 765 (800-1)	1620-3 / 1005 (1100-3)	1840-3 / 1225 (1300-3)

SE-4, 11 JUL 2024 to 08 AUG 2024

SE-4, 11 JUL 2024 to 08 AUG 2024