

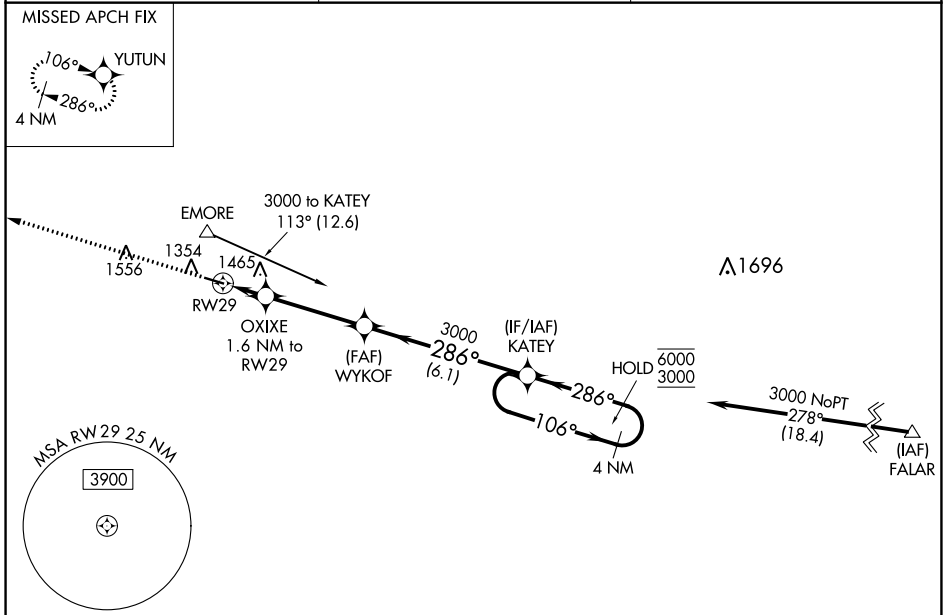
WAAS CH <b>70529</b> <b>W29A</b>	APP CRS <b>286°</b>	Rwy Idg TDZE Apt Elev	<b>4001</b> <b>1277</b> <b>1277</b>
--	------------------------	-----------------------------	---

# RNAV (GPS) RWY 29

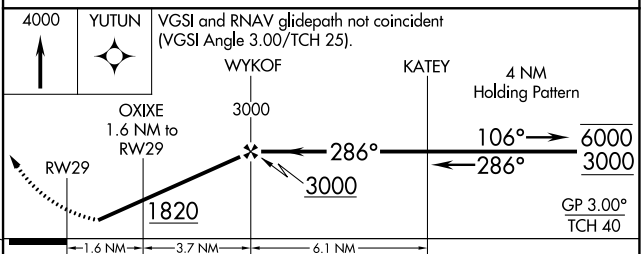
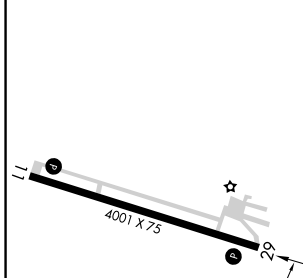
FILLMORE COUNTY (FKA)

RNP APCH-GPS.	MISSED APPROACH: Climb to 4000 direct YUTUN and hold.
<p><b>▼</b> Rwy 29 helicopter visibility reduction below 3/4 SM NA.</p> <p><b>▲</b> For uncompensated Baro-VNAV systems, LNAV/VNAV NA below -17°C or above 54°C.</p>	

AWOS-3PT <b>118.55</b>	ROCHESTER APP CON* <b>119.8 251.125</b>	CTAF <b>122.9 0</b>
---------------------------	--	------------------------



ELEV 1277	TDZE 1277
-----------	-----------



CATEGORY	A	B	C	D
LPV DA	1527-1 250 (300-1)			NA
LNAV/VNAV DA	1550-1 273 (300-1)			NA
LNAV MDA	1780-1	503 (600-1)	1780-1 3/8 503 (600-1 3/8)	NA
<b>C</b> CIRCLING	1780-1 503 (600-1)	1900-1 623 (700-1)	1900-1 3/4 623 (700-1 3/4)	NA

REIL Rwy 11 and 29 **0**

MIRL Rwy 11-29 **0**

NC-1, 11 JUL 2024 to 08 AUG 2024

NC-1, 11 JUL 2024 to 08 AUG 2024