

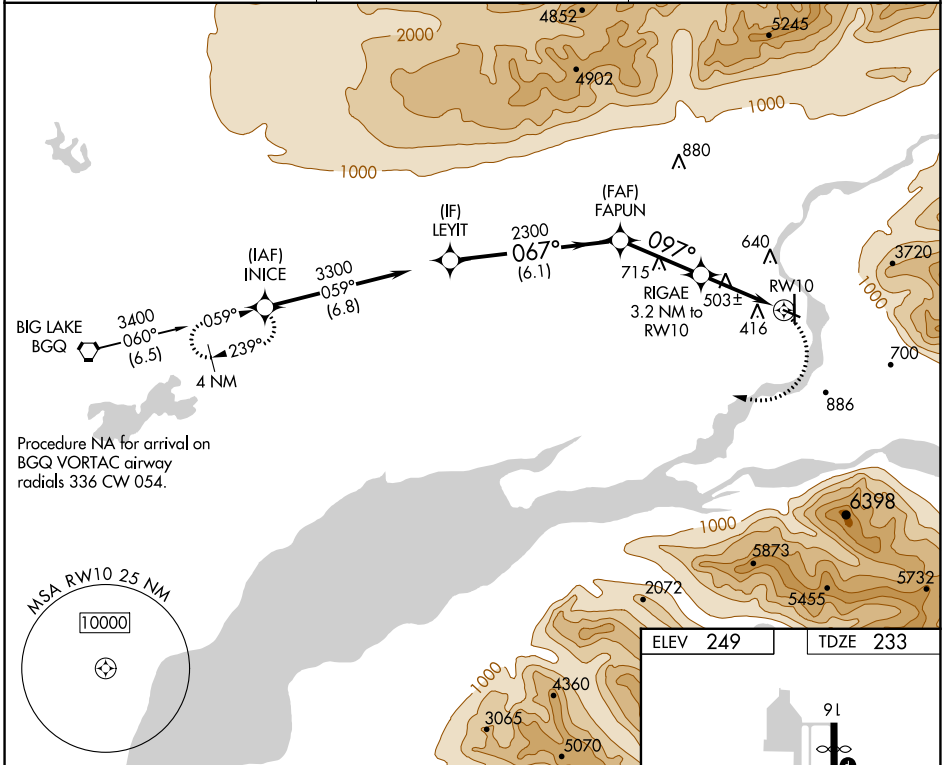
WAAS CH 40425 W10A	APP CRS 097°	Rwy Idg TDZE Apt Elev	3616 233 249
--	------------------------	-----------------------------	---

RNAV (GPS) RWY 10

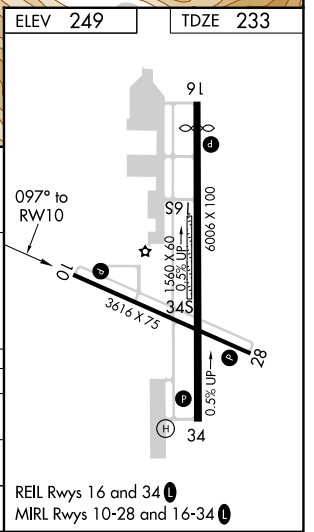
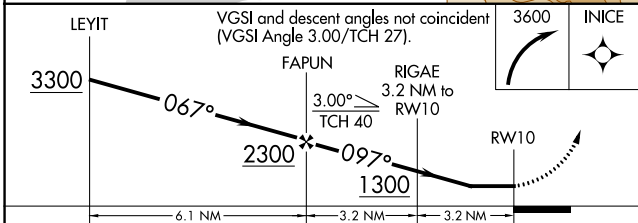
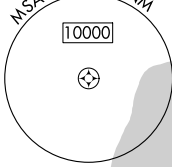
WARREN "BUD" WOODS PALMER MUNI (PAQ) (PAAQ)

RNP APCH.	MISSED APPROACH: (Do not exceed 185K until INICE) Climbing right turn to 3600 direct INICE and hold.
<p>▼ Circling NA northeast of Rwy 16-28. Procedure NA at night.</p> <p>▲ Rwy 10 helicopter visibility reduction below 1 SM NA.</p>	

AFIS 134.75	ANCHORAGE APP CON 118.6 290.5	PALMER RADIO 123.6 (CTAF) 0 122.4
-----------------------	---	---



Procedure NA for arrival on
BGQ VORTAC airway
radials 336 CW 054.



CATEGORY	A	B	C	D
LP MDA	760-1	527 (600-1)	760-1½	527 (600-1½)
LNVA MDA	820-1	587 (600-1)	820-1⅝	587 (600-1⅝)
CIRCLING	860-1 611 (700-1)	940-1 691 (700-1)	1300-3	1051 (1100-3)

REIL Rwy 16 and 34
MIRL Rwy 10-28 and 16-34

AK, 11 JUL 2024 to 05 SEP 2024

AK, 11 JUL 2024 to 05 SEP 2024