

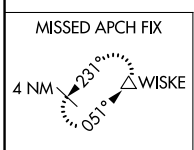
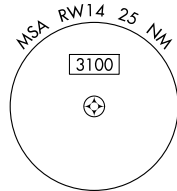
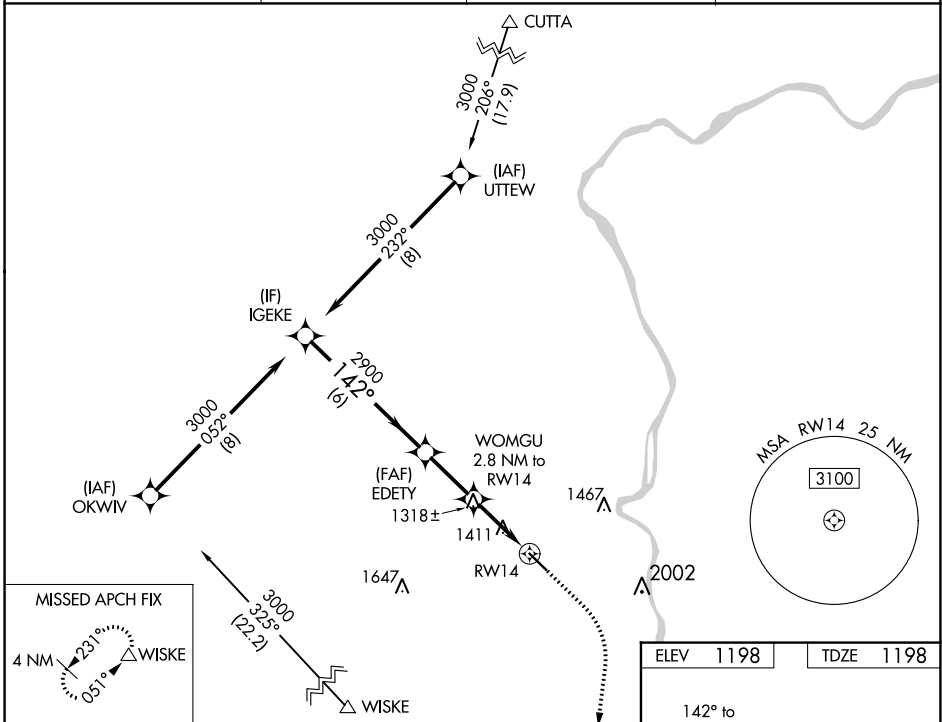
WAAS CH 66039 W14A	APP CRS 142°	Rwy ldg TDZE Apt Elev	5001 1198 1198
--	------------------------	-----------------------------	---

RNAV (GPS) RWY 14

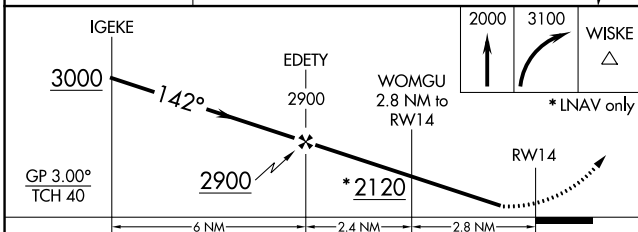
GEARY A BATES/JEFFERSON COUNTY AIRPARK (2G2)

RNP APCH.	MISSED APPROACH: Climb to 2000 then climbing right turn to 3100 direct WISKE and hold.
▽ Rwy 14 helicopter visibility reduction below 3/4 SM NA. Baro-VNAV NA when using Wheeling altimeter setting. For uncompensated Baro-VNAV systems, LNAV/VNAV NA below -17°C or above 54°C. When local altimeter setting not received, use Wheeling altimeter setting.	

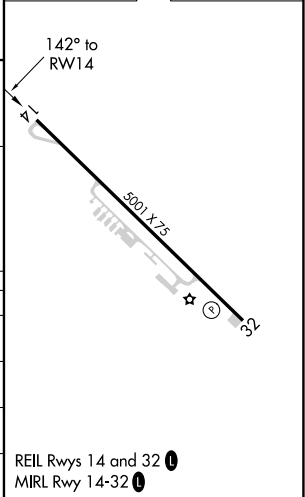
AWOS-3 121.625	HLG ASOS 127.375	PITTSBURGH APP CON 124.75 338.2	UNICOM 122.8 (CTAF) 0
--------------------------	----------------------------	---	---------------------------------



ELEV 1198	TDZE 1198
-----------	-----------



CATEGORY	A	B	C	D
LPV DA	1475-1 277 (300-1)			NA
LNAV/VNAV DA	1799-1 3/4 601 (700-1 3/4)			NA
LNAV MDA	1740-1	542 (600-1)	1740-1 5/8 542 (600-1 5/8)	NA
C CIRCLING	1800-1 602 (700-1)	1980-1 782 (800-1)	1980-2 1/4 782 (800-2 1/4)	NA



EC-2, 11 JUL 2024 to 08 AUG 2024

EC-2, 11 JUL 2024 to 08 AUG 2024

RNAV (GPS) RWY 14