

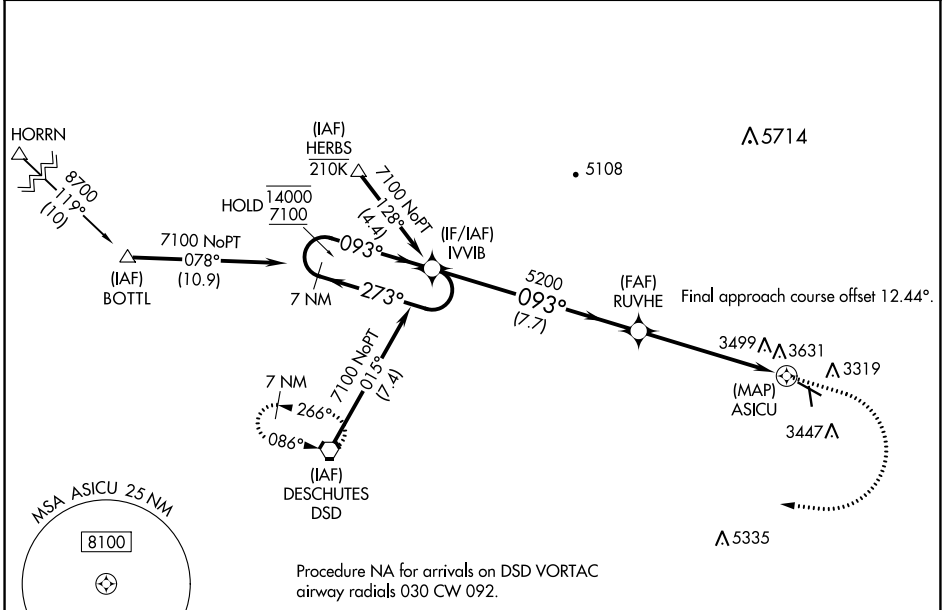
WAAS CH 60936 W11A	APP CRS 093°	Rwy Idg TDZE Apt Elev	5405 3246 3251
--	------------------------	-----------------------------	---

RNAV (GPS) RWY 11

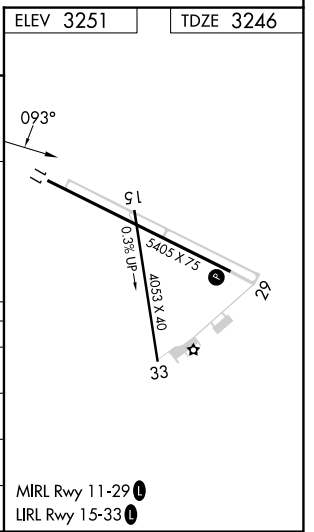
PRINEVILLE (S39)

RNP APCH-GPS.	MISSED APPROACH: Climb to 5100 then climbing right turn to 7100 direct DSD VORTAC and hold.
<p>⚠ Circling NA for Cat D south of Rwy 11-29.</p> <p>⚠ Rwy 11 helicopter visibility reduction below 3/4 SM NA.</p> <p>⚠ Circling Rwy 15 NA at night.</p>	*Missed approach requires minimum climb of 215 feet per NM to 5400.

AWOS-3PT 118.325	SEATTLE CENTER 126.15 269.475	UNICOM 122.7 (CTAF) 0
----------------------------	---	---------------------------------



	7 NM Holding Pattern		5100	7100	DSD
	14000	7100	↑	↷	⬡
	←273°	→093°			
				0.7 NM to ASICU	
				ASICU	
				3.00°	
				TCH 40	
				0.7	0.5
				←4.8 NM	
CATEGORY	A	B	C	D	
LP MDA*	3660-1	414 (500-1)	3660-1 1/8	414 (500-1 1/8)	
LP MDA	3760-1	514 (600-1)	3760-1 3/8	514 (600-1 3/8)	
LNAV MDA	3900-1	654 (700-1)	3900-1 7/8	654 (700-1 7/8)	
CIRCLING	3960-1 709 (800-1)	4040-1 789 (800-1)	4040-2 1/4 789 (800-2 1/4)	4040-2 1/2 789 (800-2 1/2)	



NW-1, 11 JUL 2024 to 08 AUG 2024

NW-1, 11 JUL 2024 to 08 AUG 2024