

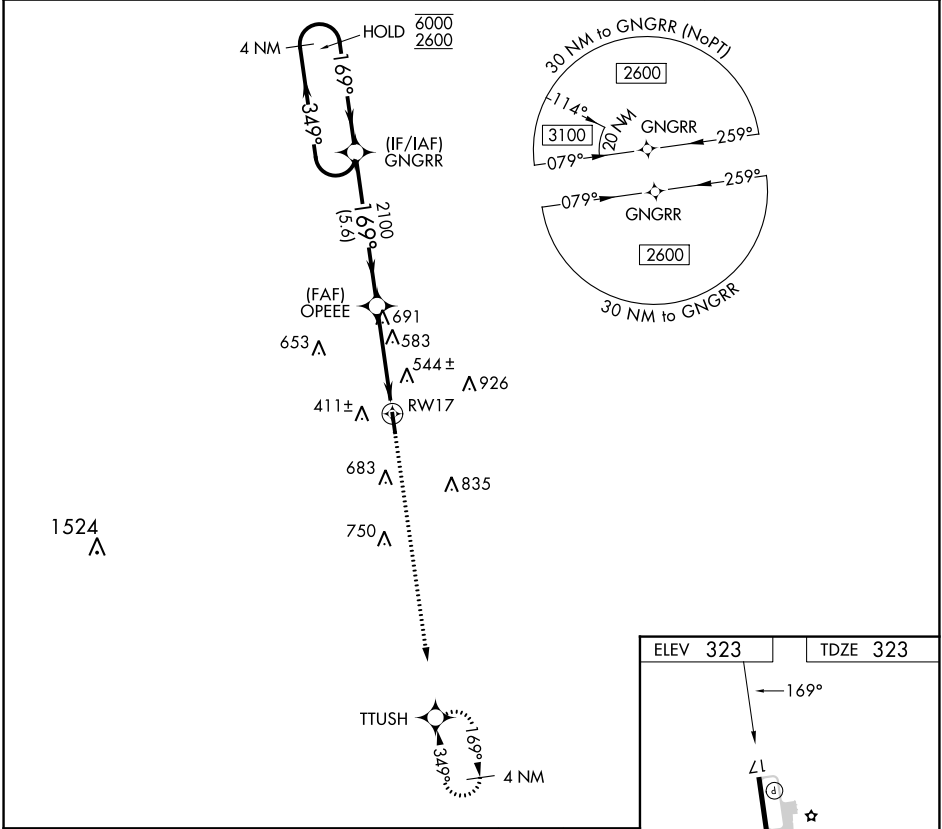
APP CRS	Rwy Idg	<b>4000</b>
<b>169°</b>	TDZE	<b>323</b>
	Apt Elev	<b>323</b>

# RNAV (GPS) RWY 17

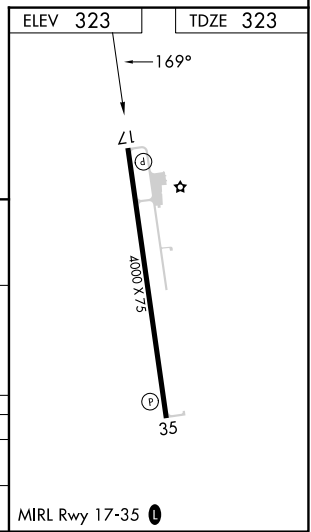
SMITHVILLE CRAWFORD MUNI (84R)

RNP APCH - GPS.		MISSED APPROACH: Climb to 2600 direct TTUSH and hold.
<p>▼ Rwy 17 helicopter visibility reduction below 1 SM NA.</p> <p>▲ NA Straight-in Rwy 17 NA at night, Circling Rwy 17 NA at night.</p>		

GYB AWOS-3 <b>119.225</b>	AUSTIN APP CON <b>120.875 270.25</b>	CTAF <b>122.9</b>	<b>123.30</b>
------------------------------	---	----------------------	---------------



4 NM Holding Pattern	GNGRR		2600	TTUSH
	6000 ← 349°	→ 169°	↑	✧
	OPEEE			
	2100		4.20°	TCH 40
	RWY17			
	5.6 NM		3.9 NM	



SC-3, 11 JUL 2024 to 08 AUG 2024

SC-3, 11 JUL 2024 to 08 AUG 2024