

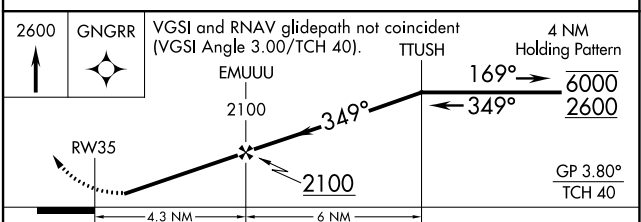
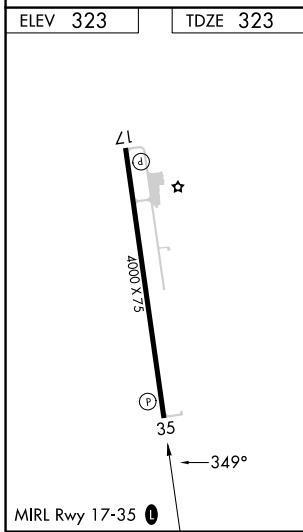
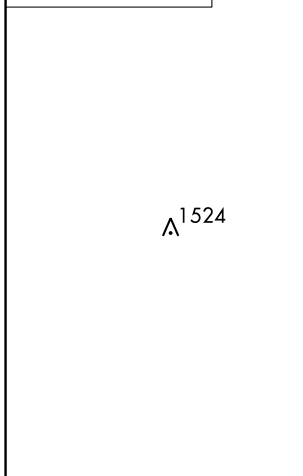
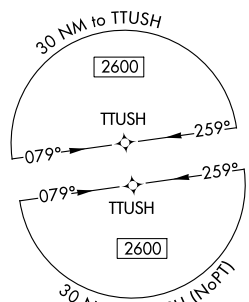
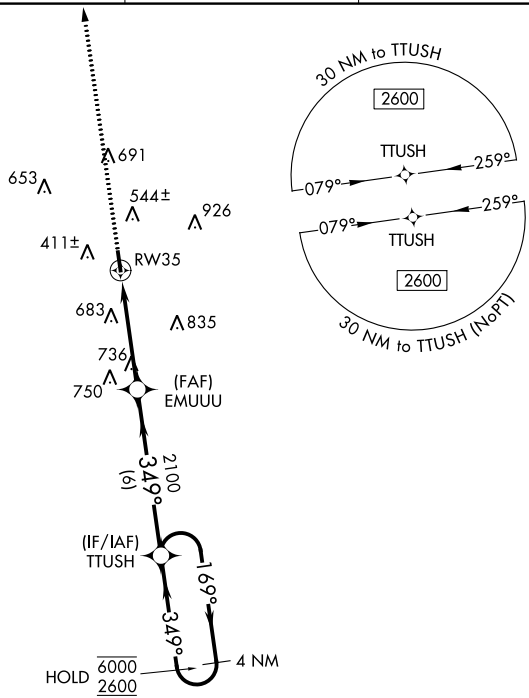
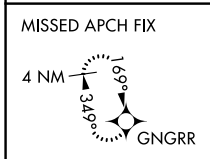
WAAS CH 99744 W35A	APP CRS 349°	Rwy Idg 4000 TDZE 323 Apt Elev 323
--	------------------------	---

RNAV (GPS) RWY 35

SMITHVILLE CRAWFORD MUNI (84R)

RNP APCH - GPS.	MISSED APPROACH: Climb to 2600 direct GNGRR and hold.
⚠ NA Circling Rwy 17 NA at night. Rwy 35 helicopter visibility reduction below 1 SM NA. Baro-VNAV NA.	

GYB AWOS-3 119.225	AUSTIN APP CON 120.875 270.25	CTAF 122.9	123.30
------------------------------	---	----------------------	---------------



CATEGORY	A	B	C	D
LPV DA	648-1	325 (400-1)		NA
LNAV/VNAV DA	827-1 $\frac{3}{8}$	504 (600-1 $\frac{3}{8}$)		NA
LNAV MDA	1040-1	717 (800-1)		NA
CIRCLING	1040-1	717 (800-1)		NA