

WAAS CH 70431 W24A	APP CRS 245°	Rwy Idg TDZE Apt Elev	3605 1666 1666
--	------------------------	-----------------------------	---

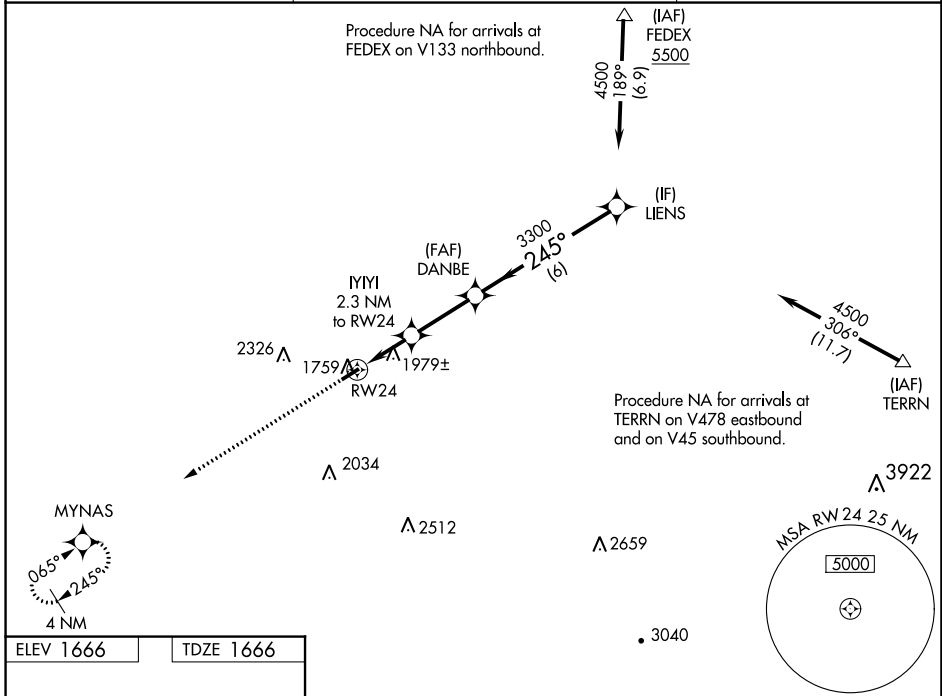
RNAV (GPS) RWY 24

LOGAN COUNTY (6L4)

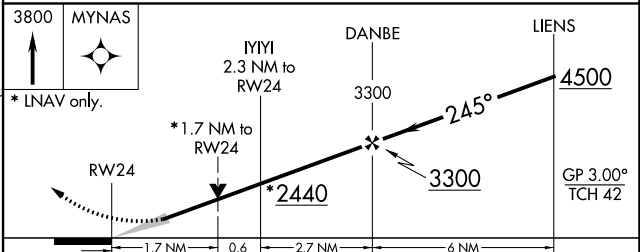
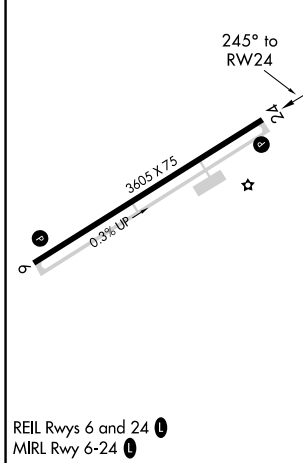
⚠ For uncompensated Baro-VNAV systems, LNAV/VNAV NA below -18°C (0°F) or above 54°C (130°F). Baro-VNAV and VDP NA when using Pineville altimeter setting. DME/DME RNP-0.3 NA.
⚠ When local altimeter setting not received, use Pineville altimeter setting: increase LPV DA to 1985 feet and all visibilities 1/8 SM; increase LNAV/VNAV DA to 1988 feet and all visibilities 1/4 SM; increase all MDA 80 feet and LNAV Cat C visibility and Circling Cat B visibility 1/4 SM.

MISSED APPROACH:
Climb to 3800 direct MYNAS and hold.

AWOS-3PT 119.375	CHARLESTON APP CON 119.2 269.125	CTAF 122.9
----------------------------	--	-------------------



ELEV 1666	TDZE 1666
-----------	-----------



CATEGORY	A	B	C	D
LPV DA	1916-7/8	250 (300-7/8)		NA
LNAV/VNAV DA	1919-7/8	253 (300-7/8)		NA
LNAV MDA	2240-1	574 (600-1)	2240-1 5/8 574 (600-1 5/8)	NA
C CIRCLING	2360-1 694 (700-1)	2400-1 734 (800-1)	2720-3 1054 (1100-3)	NA

NE-4, 11 JUL 2024 to 08 AUG 2024

NE-4, 11 JUL 2024 to 08 AUG 2024