

APP CRS 227°	Rwy Idg 3530
	TDZE 289
	Apt Elev 290

RNAV (GPS) RWY 22

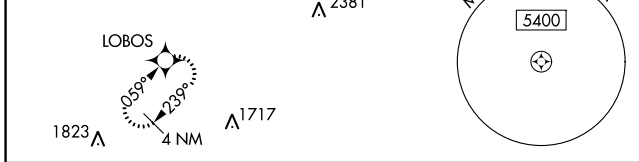
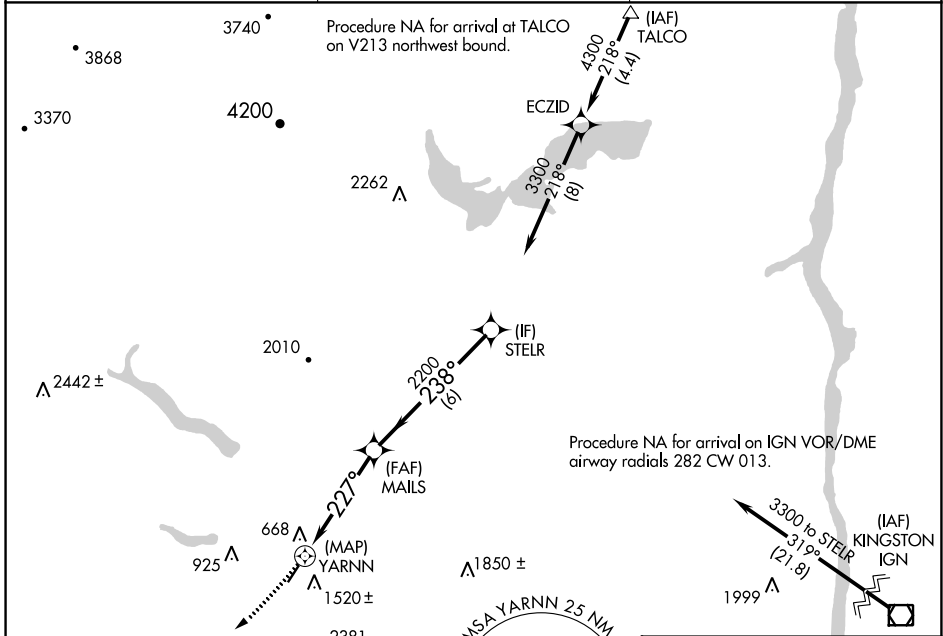
JOSEPH Y RESNICK (N89)

RNP APCH - GPS.

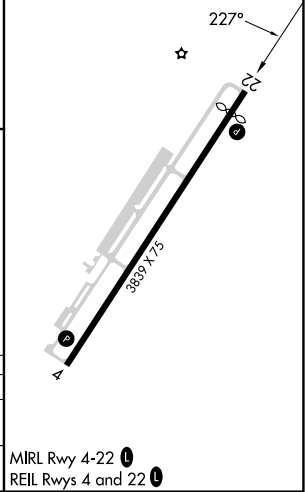
NA Circling NA southeast of Rwy 4-22. Procedure NA at night. Rwy 22 helicopter visibility reduction below 1 SM NA. Use New York Stewart Intl altimeter setting, **-6° C** when not received, use Poughkeepsie altimeter setting.

MISSED APPROACH: Climbing right turn to 4000 direct LOBOS and hold, continue climb-in-hold to 4000.

SWF ASOS 124.575	NEW YORK APP CON 132.75 363.1	UNICOM 122.8 (CTAF)
----------------------------	---	-------------------------------



ELEV 290	D TDZE 289
----------	-------------------



4000	LOBOS	Visual Segment - Obstacles.		
YARNN		MAILS	STELR	
227°		238°	3300	
0.5		4.5 NM	6 NM	
CATEGORY	A	B	C	D
RNAV MDA	1980-1¼ 1691 (1700-1¼)	1980-1½ 1691 (1700-1½)	NA	
C CIRCLING	1980-1¼ 1690 (1700-1¼)	1980-1½ 1690 (1700-1½)	NA	

MRL Rwy 4-22 **1**
REIL Rws 4 and 22 **1**

NE-2, 11 JUL 2024 to 08 AUG 2024

NE-2, 11 JUL 2024 to 08 AUG 2024