

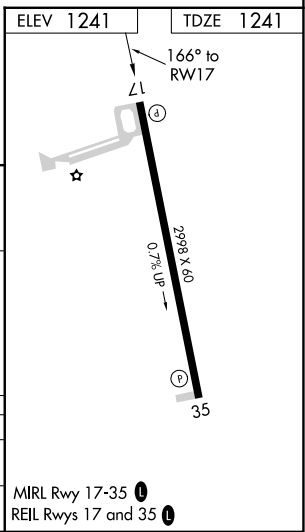
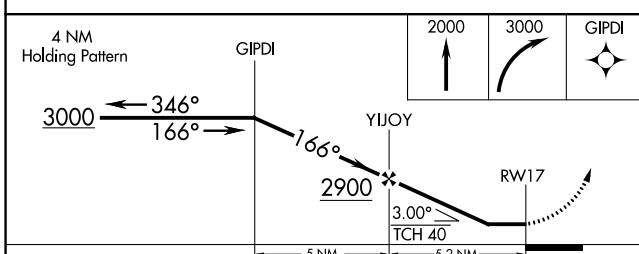
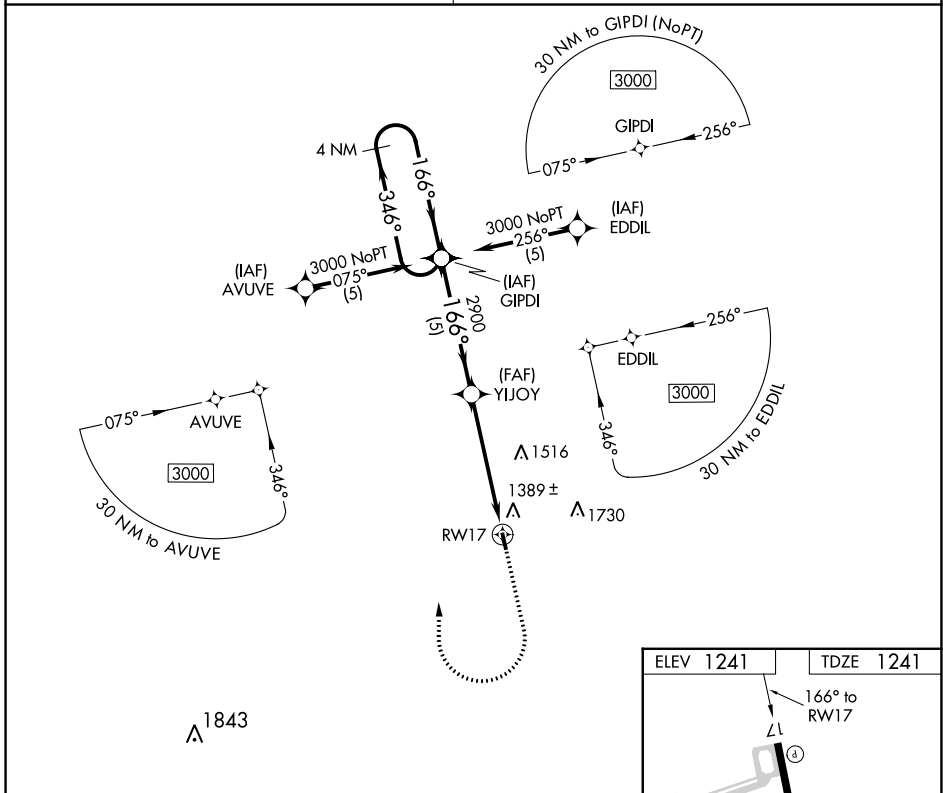
APP CRS	Rwy Idg	2998
166°	TDZE	1241
	Apt Elev	1241

RNAV (GPS) RWY 17

SALEM MEML (K33)

RNP APCH.	Use Rolla Nil altimeter setting.	MISSED APPROACH: Climb to 2000 then climbing right turn to 3000 direct GIPDI WP and hold.
▼	Rwy 17 helicopter visibility reduction below ¾ SM NA.	

KANSAS CITY CENTER 128.35 284.675	CTAF 122.9
---	----------------------



CATEGORY	A	B	C	D
LNAV	1740-1	499 (500-1)		NA
CIRCLING	1840-1	599 (600-1)		NA

NC-3, 11 JUL 2024 to 08 AUG 2024

NC-3, 11 JUL 2024 to 08 AUG 2024