

WAAS CH <b>77535</b> <b>W23A</b>	APP CRS <b>233°</b>	Rwy Idg TDZE Apt Elev	<b>3508</b> <b>610</b> <b>610</b>
--	------------------------	-----------------------------	---

# RNAV (GPS) RWY 23

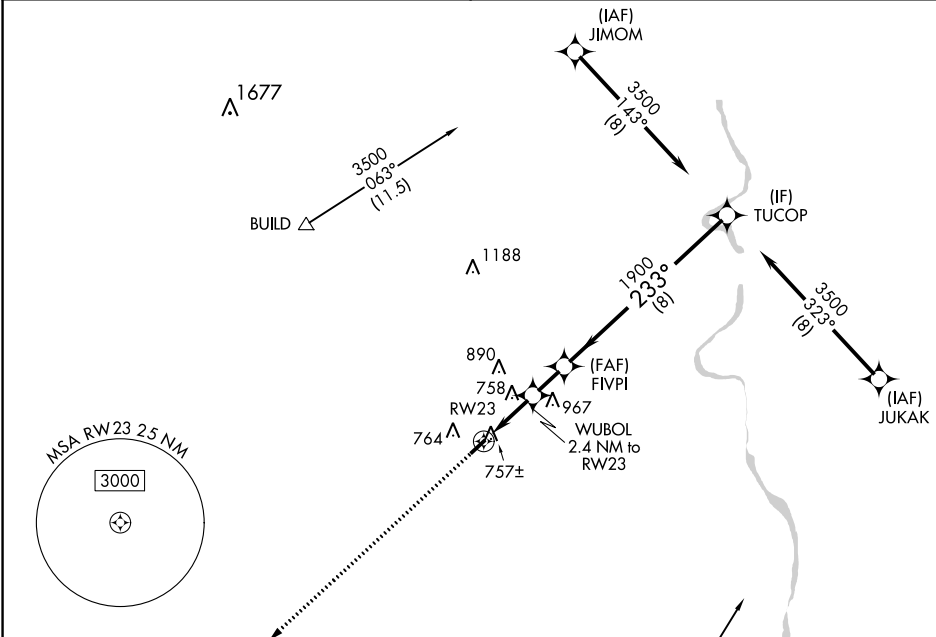
UNION COUNTY, TROY SHELTON FLD (35A)

RNP APCH.

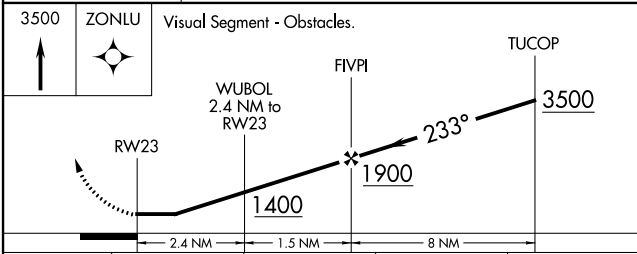
▼ When local altimeter setting not received, use Laurens altimeter setting.  
 ▲ NA Procedure NA at night. Rwy 23 helicopter visibility reduction below 1 SM NA.

MISSED APPROACH: Climb to 3500 direct ZONLU and hold.

AWOS-3PT <b>119.45</b>	GREER APP CON ★ <b>119.4 350.2</b>	UNICOM <b>122.7</b> (CTAF) ①
---------------------------	---------------------------------------	---------------------------------



ELEV 610	TDZE 610
----------	----------



CATEGORY		A	B	C	D
LP	MDA	1080-1	470 (500-1)		NA
LNAV	MDA	1140-1	530 (600-1)		NA
☑	CIRCLING	1180-1	570 (600-1)		NA

SE-2, 11 JUL 2024 to 08 AUG 2024

SE-2, 11 JUL 2024 to 08 AUG 2024