

WAAS CH <b>81805</b> <b>W33A</b>	APP CRS <b>329°</b>	Rwy Idg TDZE Apt Elev	<b>6000</b> <b>195</b> <b>219</b>
--	------------------------	-----------------------------	---

# RNAV (GPS) RWY 33

STAFFORD RGNL (RMN)

RNP APCH - GPS.

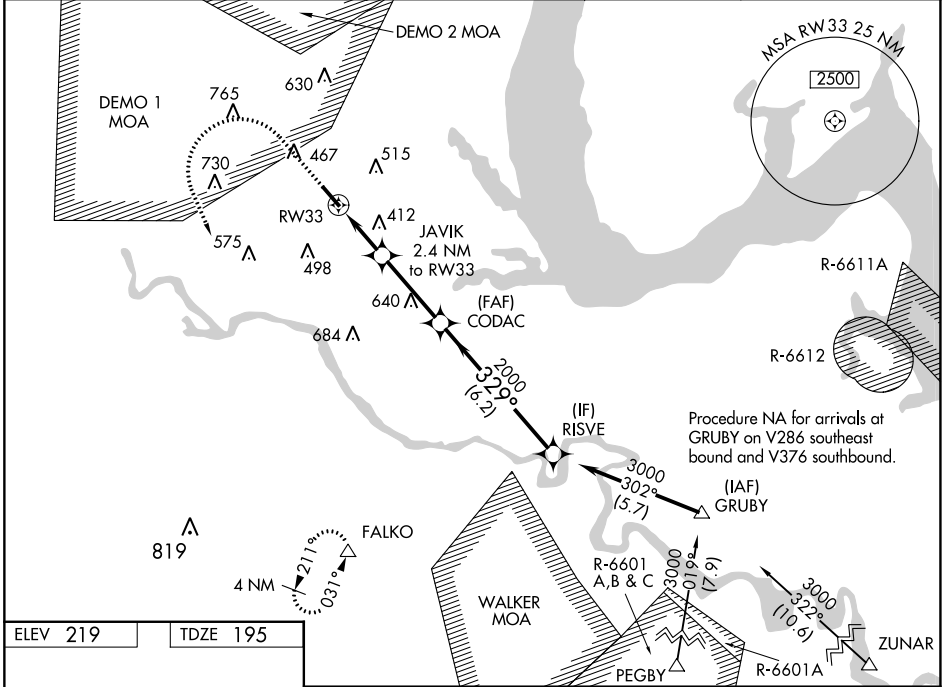
**⚠** Inop table does not apply to LPV all Cats. For uncompensated Baro-VNAV systems, LNAV/VNAV NA below -15°C or above 54°C. Circling Rwy 15 NA at night.

MALS

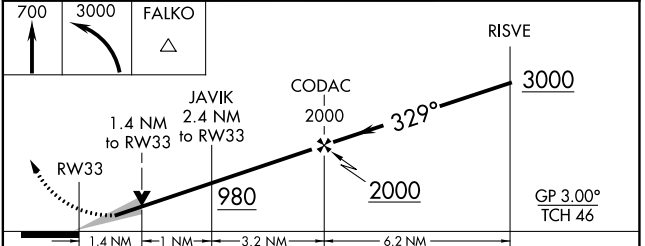
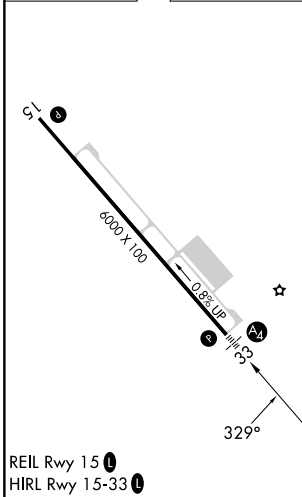


**MISSED APPROACH:** Climb to 700 then climbing left turn to 3000 direct FALKO and hold, continue climb-in-hold to 3000.

AWOS-3 <b>126.325</b>	QUANTICO APP CON * <b>127.05 290.375</b>	GCO <b>135.075</b>	UNICOM <b>122.725 (CTAF)</b>
--------------------------	---	-----------------------	---------------------------------



ELEV 219	TDZE 195
----------	----------



CATEGORY	A	B	C	D
LPV DA	445-3/4 250 (300-3/4)			
LNAV/VNAV DA	680-1 1/8 485 (500-1 1/8)			
LNAV MDA	680-3/4	485 (500-3/4)	680-1 1/8	485 (500-1 1/8)
CIRCLING	720-1 501 (600-1)	820-1 601 (700-1)	820-1 3/4 601 (700-1 3/4)	1040-2 3/4 821 (900-2 3/4)

NE-3, 11 JUL 2024 to 08 AUG 2024

NE-3, 11 JUL 2024 to 08 AUG 2024