

WAAS CH 40209 W34A	APP CRS 342°	Rwy Idg 3248 TDZE 17 Apt Elev 17
--	------------------------	---

RNAV (GPS) RWY 34

NAPAKIAK (WNA) (PANA)

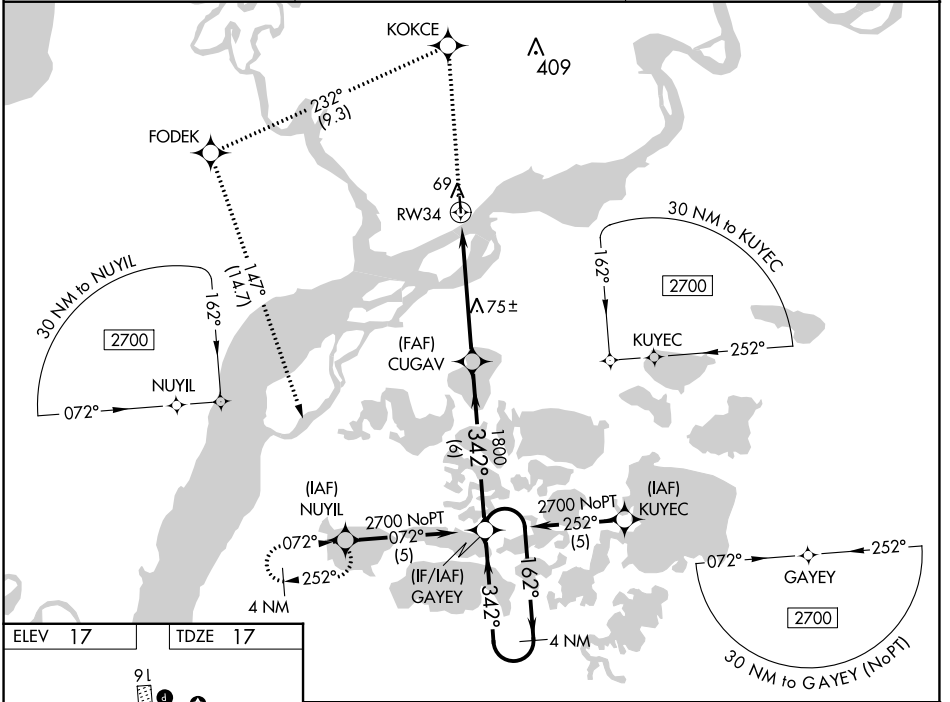
V DME/DME RNP-0.3 NA. When local altimeter setting not received, use Bethel altimeter setting. Procedure NA at night for Cat C and D aircraft. Rwy 34 helicopter visibility reduction 1 SM NA.

A NA

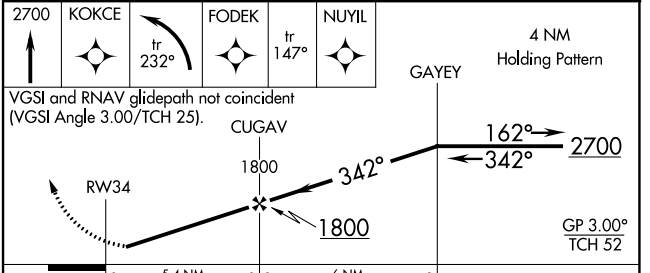
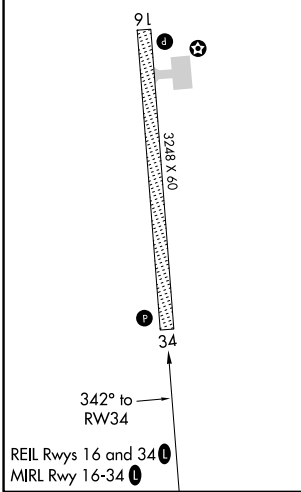
W

MISSED APPROACH: Climb to 2700 direct KOKCE and left turn on track 232° to FODEK on track 147° to NUYIL and hold.

AWOS-3P 121.425	ANCHORAGE CENTER 125.2 372.0	CTAF 122.9
---------------------------	--	----------------------



ELEV 17	TDZE 17
---------	---------



CATEGORY	A	B	C	D
LPV DA	298-1 281 (300-1)			
LNAV MDA	360-1 343 (400-1)		360-1¼ 343 (400-1¼)	
CIRCLING	500-1	483 (500-1)	540-1½ 523 (600-1½)	680-2 663 (700-2)

AK, 11 JUL 2024 to 05 SEP 2024

AK, 11 JUL 2024 to 05 SEP 2024