

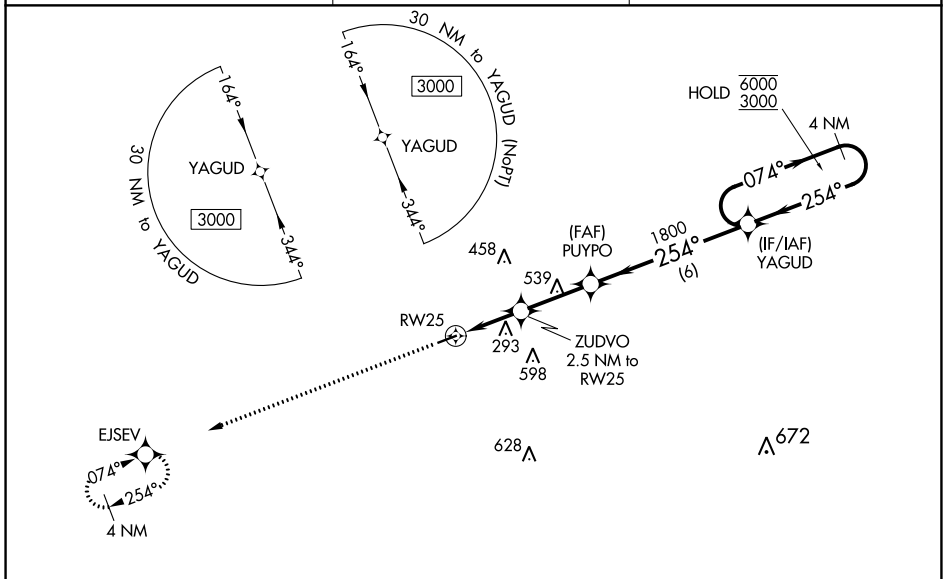
WAAS CH 58232 W25A	APP CRS 254°	Rwy Idg 4005 TDZE 103 Apt Elev 103
--	------------------------	---

RNAV (GPS) RWY 25

SUWANNEE COUNTY (24J)

RNP APCH.	<p>⚠ Procedure NA at night. Rwy 25 helicopter visibility reduction below 1 SM NA. For uncompensated Baro-VNAV systems, LNAV/VNAV NA below -15°C or above 54°C.</p>	<p>MISSED APPROACH: Climb to 3000 direct EJSEV and hold.</p>

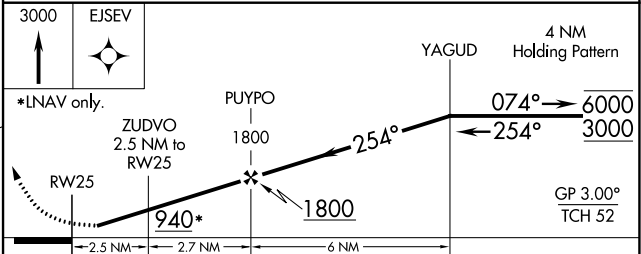
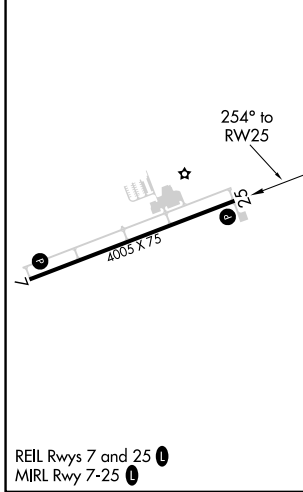
AWOS-3 118.225	JACKSONVILLE CENTER 125.375 254.325	UNICOM 122.8 (CTAF) 0
--------------------------	---	---------------------------------



SE-3, 11 JUL 2024 to 08 AUG 2024

SE-3, 11 JUL 2024 to 08 AUG 2024

ELEV 103	TDZE 103
----------	----------



CATEGORY	A	B	C	D
LPV DA	353-1	250 (300-1)		NA
LNAV/VNAV DA	536-1½	433 (500-1½)		NA
LNAV MDA	560-1	457 (500-1)		NA
C CIRCLING	560-1 457 (500-1)	600-1 497 (500-1)		NA