

WAAS CH 56540 W28A	APP CRS 283°	Rwy Idg TDZE 4230 Apt Elev 4230
--	------------------------	---

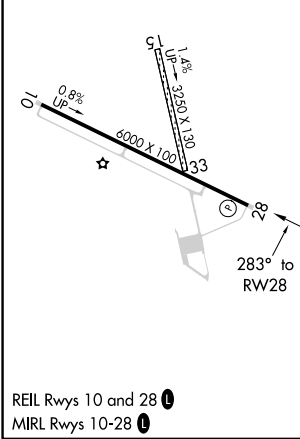
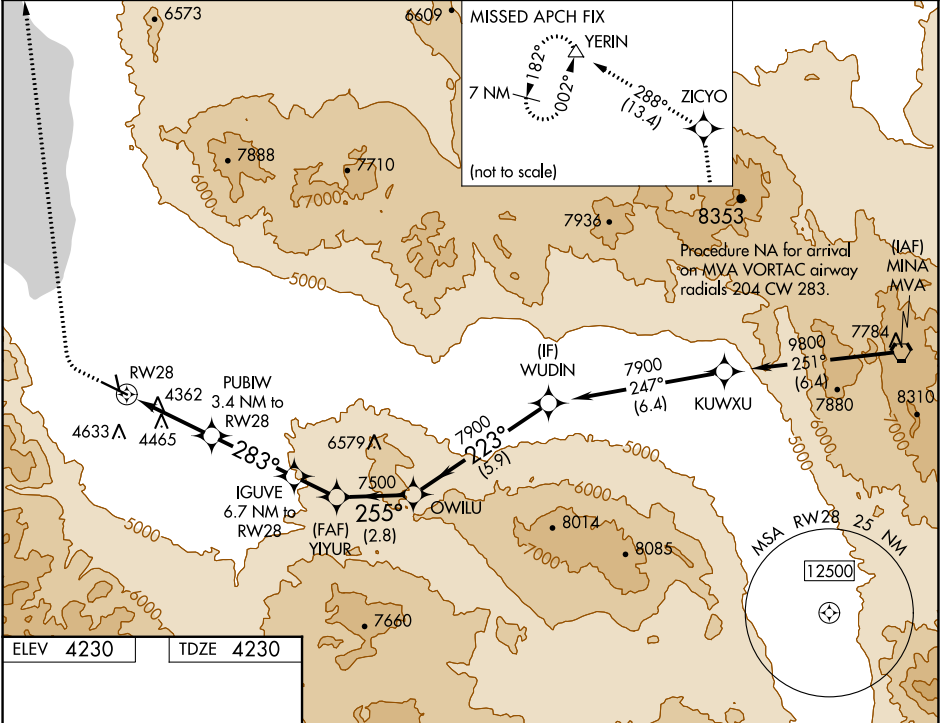
RNAV (GPS) RWY 28

HAWTHORNE INDUSTRIAL (HTH)

⚠ Circling NA to Rwsys 15 and 33. When local altimeter setting not received, procedure NA. Circling NA south of Rwy 10-28. DME/DME RNP-0.3 NA. Rwy 28 helicopter visibility reduction below ¼ SM NA.

MISSED APPROACH: Climb to 4750 then climbing right turn to 10000 direct ZICYO and on track 288° to YERIN and hold.

AWOS-3 120.225	OAKLAND CENTER 125.75 284.65	UNICOM 122.8 (CTAF) 0
--------------------------	--	---------------------------------



4750	10000	ZICYO	tr 288°	YERIN	VGSI and descent angles not coincident (VGSI Angle 3.00/TCH 49).					
					YIYUR	OWILU	WUDIN			
					PUBIW 3.4 NM to RW28	IGUVE 6.7 NM to RW28				
					1.1 NM to RW28					
					3.60° TCH 49					
					5580	6840	7500			
					1.1 NM	2.3 NM	3.3 NM	1.7 NM	2.8 NM	5.9 NM
CATEGORY	A	B	C	D						
LP MDA	4620-1	390 (400-1)	4620-1 1/8	390 (400-1 1/8)	NA					
LNAV MDA	4720-1	490 (500-1)	4720-1 3/8	490 (500-1 3/8)	NA					
C CIRCLING	4720-1	490 (500-1)	5680-3	1450 (1500-3)	NA					

SW-4, 11 JUL 2024 to 08 AUG 2024

SW-4, 11 JUL 2024 to 08 AUG 2024