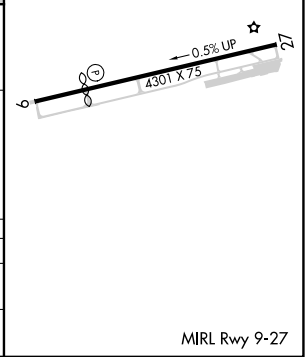
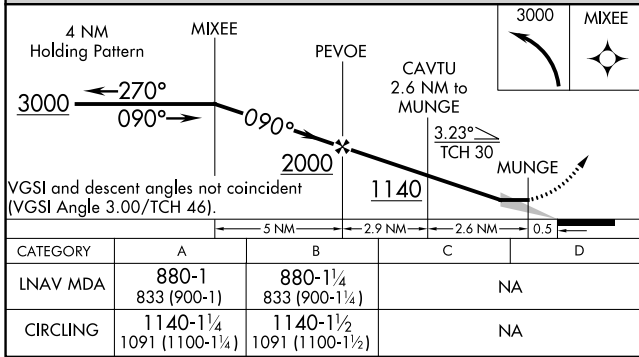
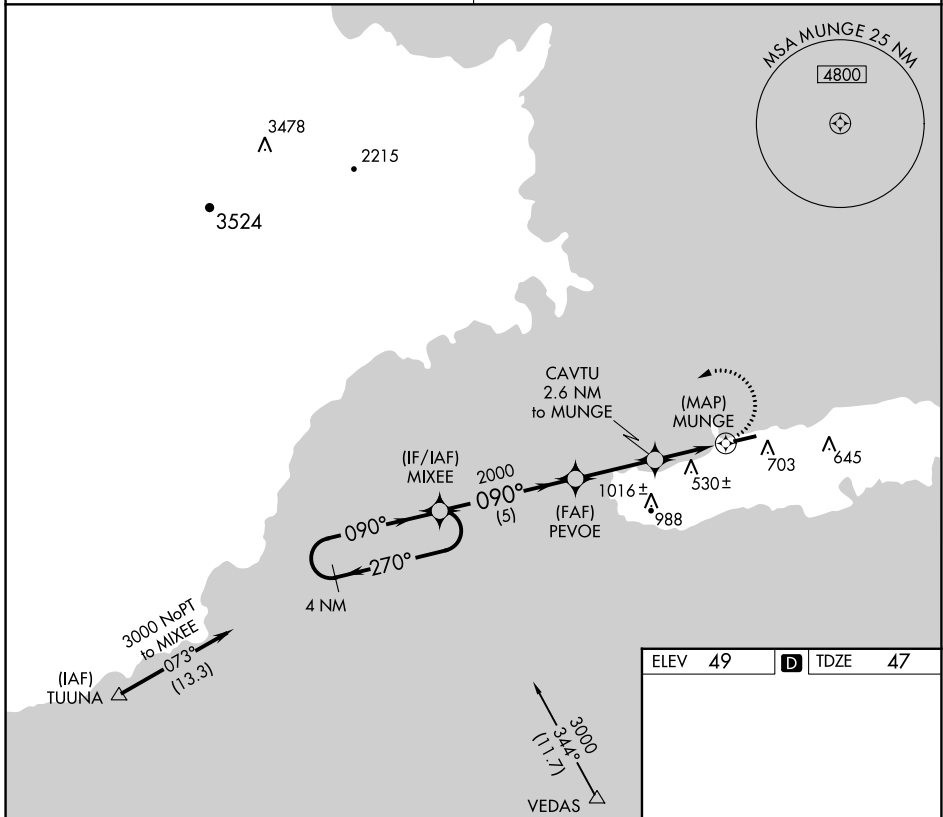


APP CRS	Rwy Idg	3405
090°	TDZE	47
	Apt Elev	49

RNAV (GPS) RWY 9

ANTONIO RIVERA RODRIGUEZ (VQS)(TJVQ)

<p>▼ Use Luis Munoz Marin Intl altimeter setting. DME/DME RNP-0.3 NA. ▲ NA Circling NA south of Rwy 9-27.</p>	<p>MISSED APPROACH: Climbing left turn to 3000 direct MIXEE and hold.</p>
<p>SAN JUAN CERAP APP CON 128.65 279.6</p>	<p>UNICOM 123.0 (CTAF)</p>



ELEV	49	D	TDZE	47
------	-----------	----------	------	-----------

SE-3, 11 JUL 2024 to 08 AUG 2024

SE-3, 11 JUL 2024 to 08 AUG 2024