

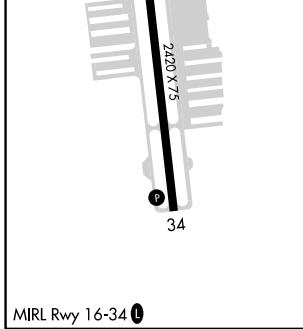
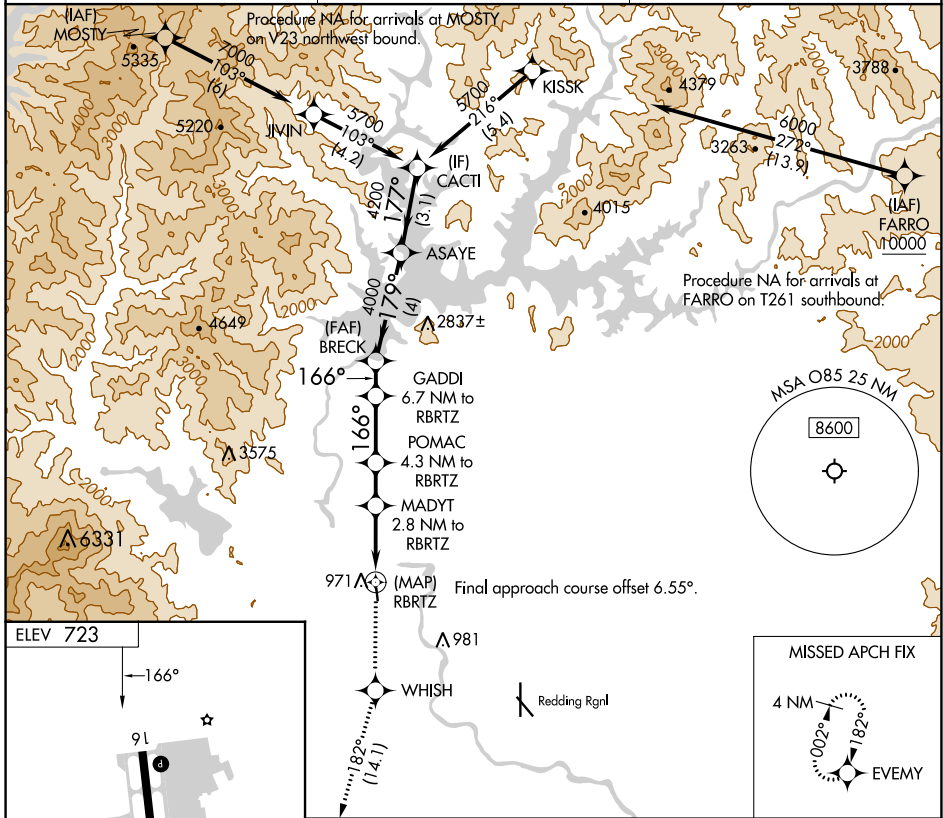
| | | |
|---------|----------|-----|
| APP CRS | Rwy Idg | N/A |
| 166° | TDZE | N/A |
| | Apt Elev | 723 |

RNAV (GPS)-A

BENTON FLD (O85)

| | |
|--|---|
| RNP APCH - GPS. | MISSED APPROACH: Climb to 4000 direct WHISH and on track 182° to EVMY and hold. |
| <p>Procedure NA at night. Rwy 16, 34 helicopter visibility reduction below 1 SM NA. When local altimeter setting not received, use Redding Rgnl altimeter setting and increase all MDAs 60 feet.</p> | |

| | | |
|--------------------------|--------------------------------------|---------------------------------|
| AWOS-2 118.675 | OAKLAND CENTER 132.2 350.3 | UNICOM 122.8 (CTAF) 0 |
|--------------------------|--------------------------------------|---------------------------------|



| | | | | |
|----------|-----------------------|-------------------------|--|------------|
| 4000 | WHISH | EVMY | VGSI and descent angles not coincident (VGSI Angle 3.50/TCH 24). | |
| ↑ | 182° | 182° | ASAYE | CACTI |
| | | | GADDI 6.7 NM to RBRTZ | BRECK |
| | | | POMAC 4.3 NM to RBRTZ | ASAYE 4200 |
| | | | MADYT 2.8 NM to RBRTZ | CACTI 5700 |
| | | | RBRTZ | 4000 |
| | | | 1960 | 2560 |
| | | | 3.70° TCH 60 | 179° |
| | | | 166° | 177° |
| | | | 2.8 NM | 1.5 NM |
| | | | 2.4 NM | 1.3 NM |
| | | | 4 NM | 3.1 NM |
| CATEGORY | A | B | C | D |
| CIRCLING | 1340-1 617 (700-1) | 1600-1¼ 877 (900-1¼) | NA | |

SW-2, 11 JUL 2024 to 08 AUG 2024

SW-2, 11 JUL 2024 to 08 AUG 2024