

APP CRS	Rwy Idg	N/A
340°	TDZE	N/A
	Apt Elev	723

RNAV (GPS)-B

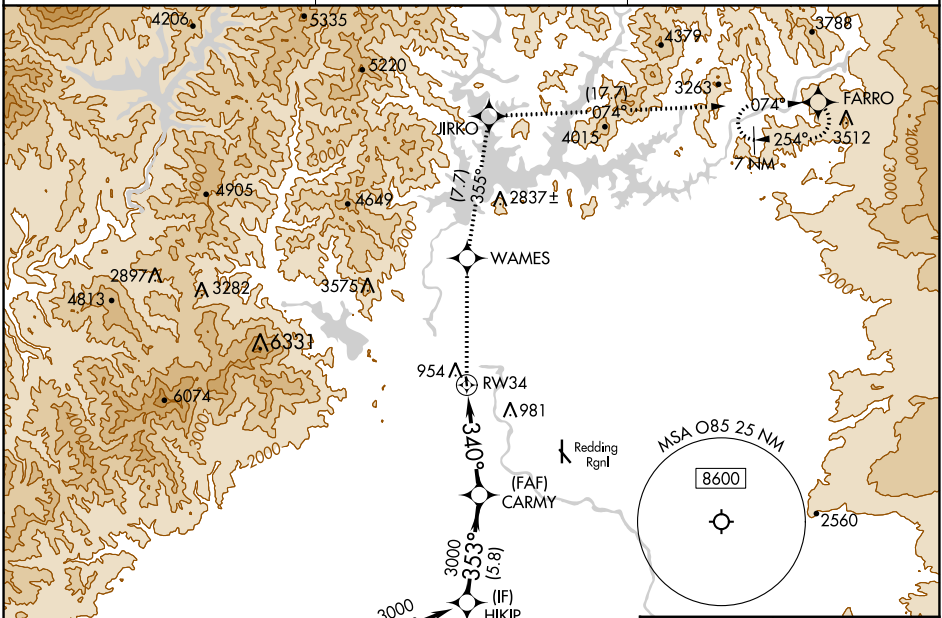
BENTON FLD (O85)

RNP APCH - GPS.

Procedure NA at night. Rwy 16, 34 helicopter visibility reduction below 1 SM NA. When local altimeter setting not received, use Redding Rgnl altimeter setting and increase all MDAs 60 feet.

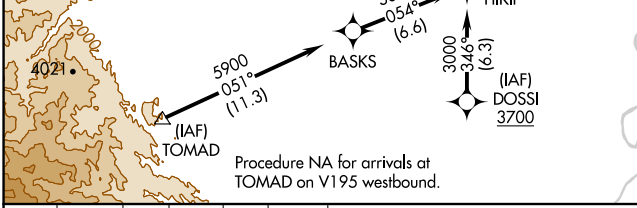
MISSED APPROACH: Climb to 10000 direct WAMES and on track 355° to JIRKO and on track 074° to FARRO and hold, continue climb-in-hold to 10000.

AWOS-2 118.675	OAKLAND CENTER 132.2 350.3	UNICOM 122.8 (CTAF)
--------------------------	--------------------------------------	-------------------------------

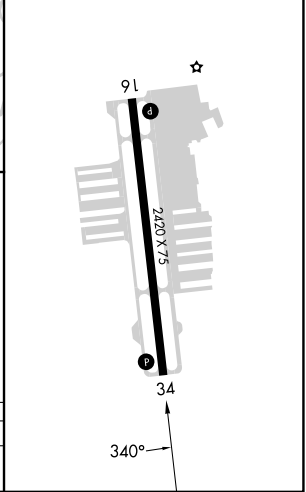


SW-2, 11 JUL 2024 to 08 AUG 2024

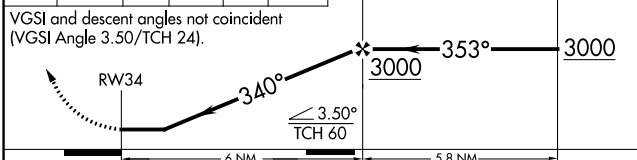
SW-2, 11 JUL 2024 to 08 AUG 2024



ELEV 723	MIRL Rwy 16-34
----------	----------------



10000	WAMES	tr	JIRKO	tr	FARRO	CARMY	HIKIP
↑	◆	355°	◆	074°	◆		



CATEGORY	A	B	C	D
CIRCLING	1900-1¼ 1177 (1200-1¼)	1900-1½ 1177 (1200-1½)	NA	