

APP CRS	Rwy Idg	<b>5006</b>
<b>008°</b>	TDZE	<b>230</b>
	Apt Elev	<b>237</b>

# RNAV (GPS) RWY 1

NORTH PICKENS (3M8)

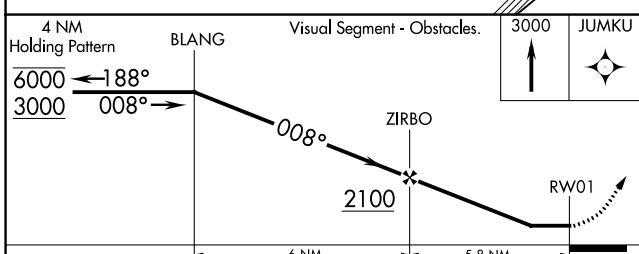
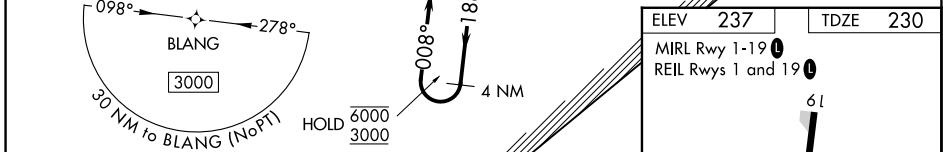
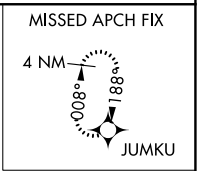
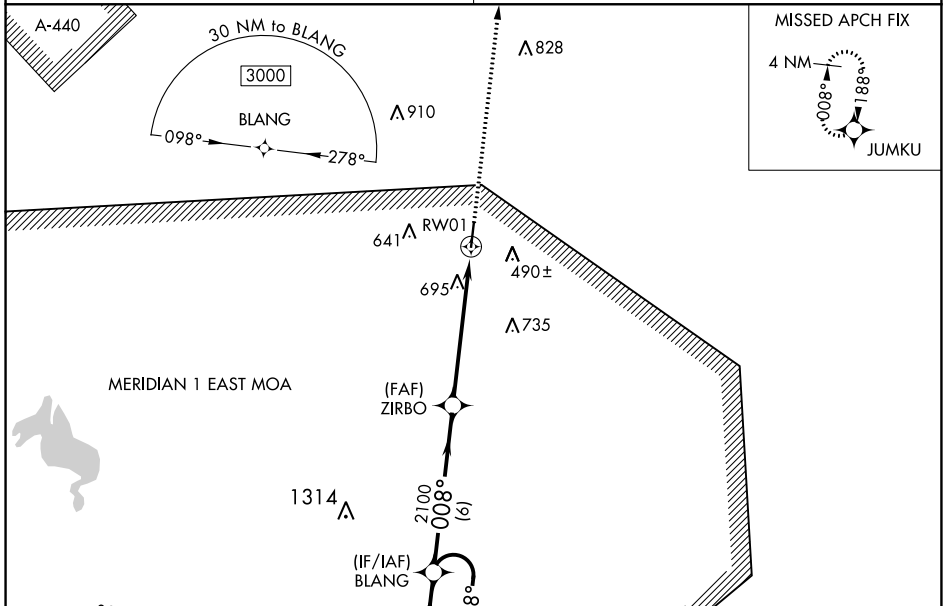
RNP APCH - GPS.

▼ Procedure NA at night. Rwy 1 helicopter visibility reduction below 1 SM NA.  
 ▲ NA Obtain local altimeter setting on CTAF; when not received, use Tuscaloosa altimeter setting; increase all MDAs 80 feet and LNAV visibility Cat B ¼ SM and Cats C and D ½ SM; increase Circling visibility all Cats ½ SM.

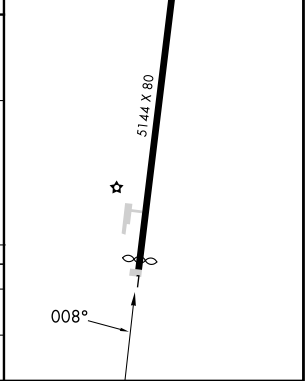
MISSED APPROACH: Climb to 3000 direct JUMKU and hold.

COLUMBUS APP CON ★  
**135.6 323.275**

CTAF  
**122.9**



CATEGORY	A	B	C	D
LNAV MDA	960-1	730 (800-1)	960-2	730 (800-2)
CIRCLING	1000-1	763 (800-1)	1000-2¼ 763 (800-2¼)	1040-2½ 803 (900-2½)



SE-4, 11 JUL 2024 to 08 AUG 2024

SE-4, 11 JUL 2024 to 08 AUG 2024