

APP CRS	Rwy Idg	3220
204°	TDZE	61
	Apt Elev	61

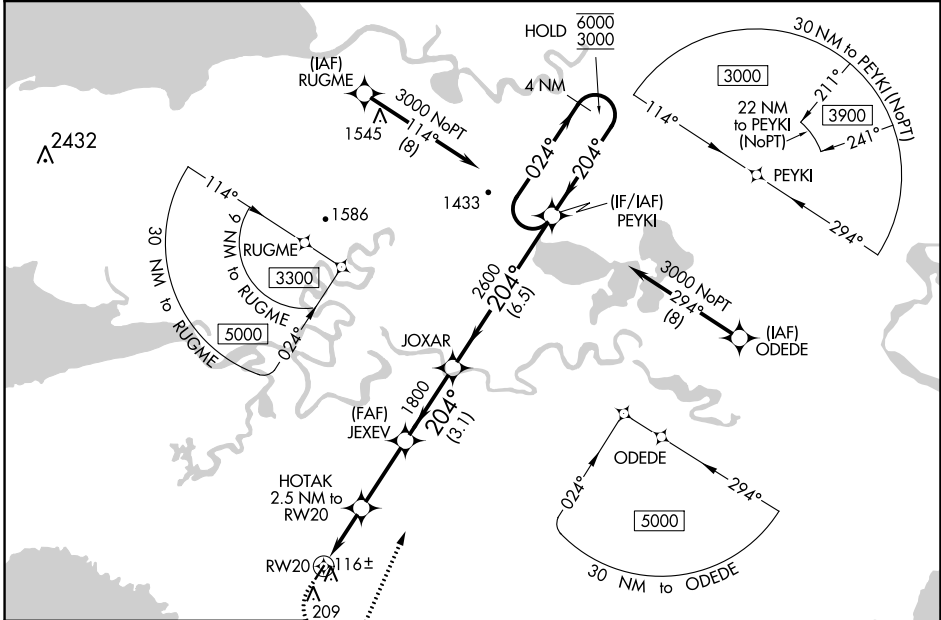
RNAV (GPS) RWY 20

CHEVAK (VAK)(PAVA)

RNP APCH.
 ▼ For uncompensated Baro-VNAV systems, LNAV/VNAV NA below -20°C or above 54°C.
 ▲

MISSED APPROACH: Climb to 500. Then climbing left turn to 3000 direct PEYKI and hold.

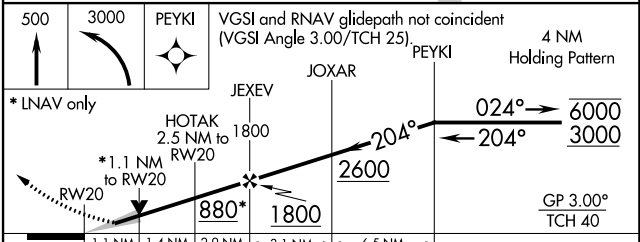
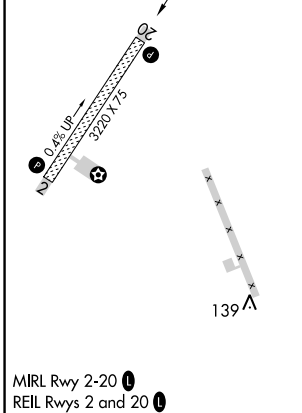
AWOS-3P 120.625	ANCHORAGE CENTER 124.5	UNICOM 122.8 0	CTAF 123.0 0
---------------------------	----------------------------------	--------------------------	------------------------



AK, 11 JUL 2024 to 05 SEP 2024

AK, 11 JUL 2024 to 05 SEP 2024

ELEV 61	TDZE 61
---------	---------



CATEGORY	A	B	C	D
LNAV/VNAV DA		311-1	250 (300-1)	
LNAV MDA		420-1	359 (400-1)	
<input checked="" type="checkbox"/> CIRCLING	520-1	459 (500-1)	520-1½ 459 (500-1½)	700-2 639 (700-2)