

APP CRS Rwy Idg **3800**  
 074° TDZE **624**  
 Apt Elev **624**

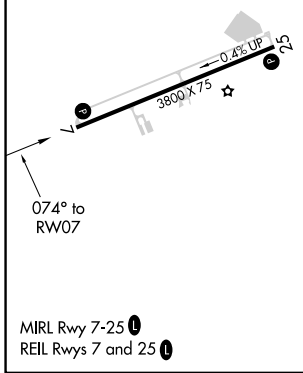
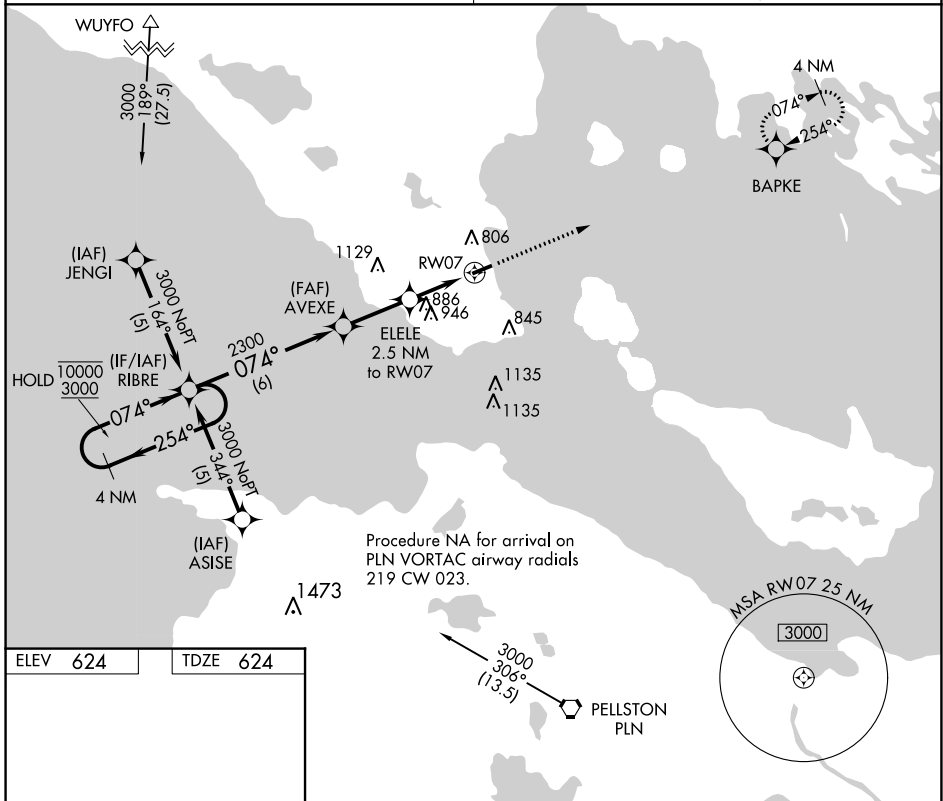
**RNAV (GPS) RWY 7**  
 MACKINAC COUNTY (83D)

RNP APCH.  
 ⚠ Straight-in Rwy 07 NA at night, Circling Rwy 07 NA at night.  
 ⚠ NA Rwy 07 helicopter visibility reduction below 1 SM NA.  
 Circling NA at night south of Rwy 07-25.

MISSED APPROACH: Climb to 3000 direct BAPKE and hold.

MINNEAPOLIS CENTER  
**134.6 354.05**

UNICOM  
**122.7 (CTAF) 0**



4 NM Holding Pattern		Visual Segment - Obstacles.		3000	BAPKE
10000 ← 254°		→ 074°		↑	✦
3000		2300			
		1460			
		RW07			
		ELELE 2.5 NM to RW07			
		6 NM		2.6 NM	
		2.5 NM			
CATEGORY	A	B	C	D	
LNAV MDA	1200-1	576 (600-1)	1200-1½ 576 (600-1½)	NA	
CIRCLING	1260-1	636 (700-1)	1300-2 676 (700-2)	NA	

EC-1, 11 JUL 2024 to 08 AUG 2024

EC-1, 11 JUL 2024 to 08 AUG 2024