

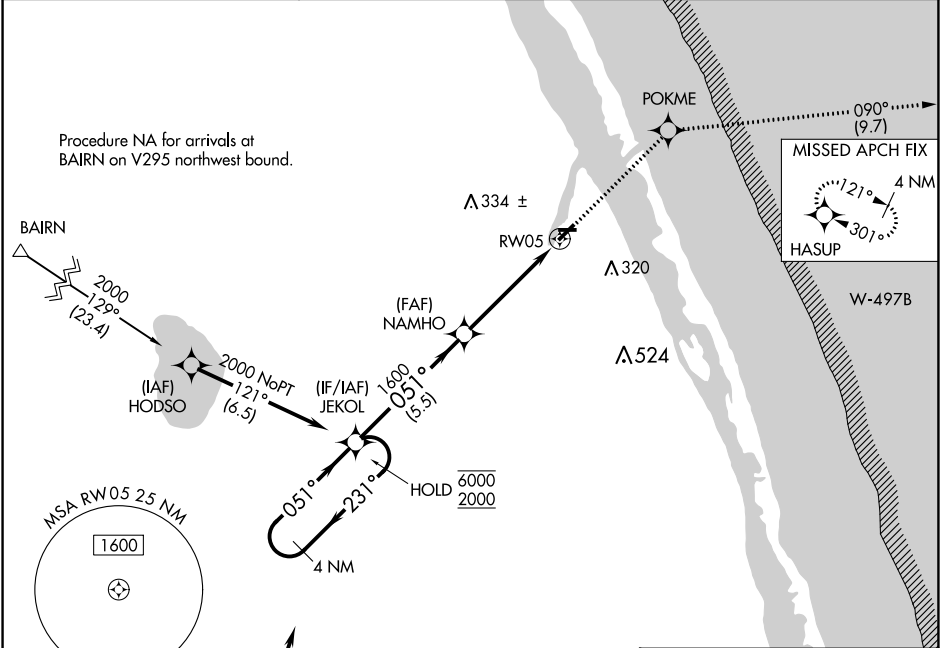
APP CRS 051°	Rwy Idg TDZE Apt Elev	N/A N/A 22
------------------------	-----------------------------	---------------------------------------

RNAV (GPS)-A

SEBASTIAN MUNI (X26)

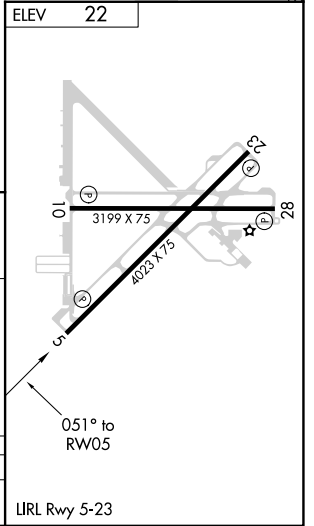
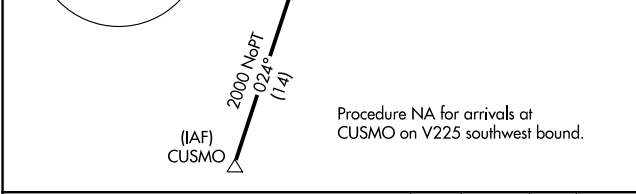
RNP APCH.	MISSED APPROACH: Climb to 2000 direct POKME and on track 090° to HASUP and hold.
<p>Procedure NA at night. When local altimeter setting not received, use Vero Beach altimeter setting and increase all MDA 40 feet and Cat C visibility ¼ SM.</p>	

AWOS-3PT 118.125	PALM BEACH APP CON 123.625 225.4	CTAF 123.05
----------------------------	--	-----------------------



SE-3, 11 JUL 2024 to 08 AUG 2024

SE-3, 11 JUL 2024 to 08 AUG 2024



4 NM Holding Pattern	JEKOL	2000	POKME	tr 090°	HASUP
6000 ← 231°	→ 051°				
2000					
		5.5 NM		4.8 NM	

CATEGORY	A	B	C	D
CIRCLING	520-1	498 (500-1)	620-1½ 598 (600-1½)	NA