

APP CRS	Rwy Idg	<b>6004</b>
<b>168°</b>	TDZE	<b>364</b>
	Apt Elev	<b>364</b>

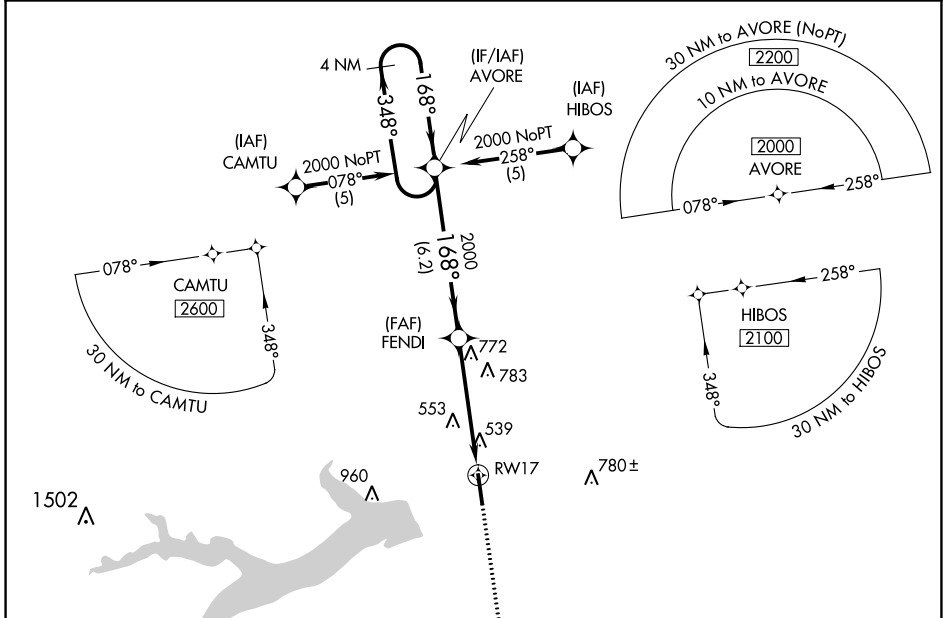
# RNAV (GPS) RWY 17

MOUNT PLEASANT RGNL (OSA)

**⚠** For uncompensated Baro-VNAV systems, LNAV/VNAV NA below -15°C (5°F) or above 48°C (118°F). DME/DME RNP-0.3 NA. When local altimeter setting not received, use Paris altimeter setting and increase all DA/MDA 120 feet, increase LNAV/VNAV visibilities ¼ mile all Cats, LNAV visibilities ½ mile all Cats, and circling visibilities ½ mile all Cats. VDP and Baro-VNAV NA when using Paris altimeter setting.

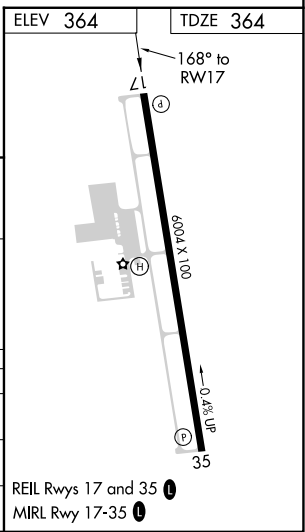
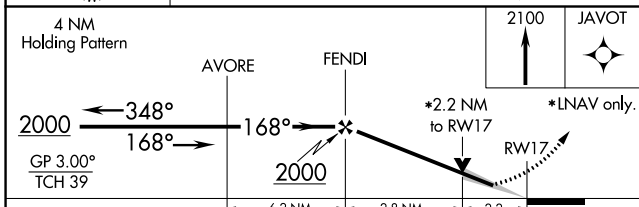
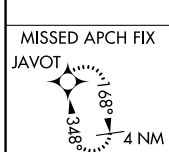
**⚠** MISSED APPROACH: Climb to 2100 direct JAVOT and hold.

AWOS-3 <b>119.775</b>	FORT WORTH CENTER <b>132.025 360.75</b>	UNICOM <b>122.7 (CTAF) 0</b>
--------------------------	--------------------------------------------	---------------------------------



SC-2, 11 JUL 2024 to 08 AUG 2024

SC-2, 11 JUL 2024 to 08 AUG 2024



CATEGORY	A	B	C	D
LNAV/VNAV DA	890-2 526 (600-2)			
LNAV MDA	1100-1 736 (800-1)	1100-2 736 (800-2)	1100-2 736 (800-2) 1/4	1100-2 736 (800-2) 1/4
CIRCLING	1100-1 736 (800-1)	1100-2 736 (800-2)	1100-2 736 (800-2) 1/4	1100-2 736 (800-2) 1/4

REIL Rwsy 17 and 35 0 MIRL Rwy 17-35 0